

MDA-MB-231/GFP-RFP Cell Line

CATALOG NUMBER: AKR-221

STORAGE: Liquid nitrogen

Note: For best results begin culture of cells immediately upon receipt. If this is not possible, store at -80°C until first culture. Store subsequent cultured cells long term in liquid nitrogen.

QUANTITY & CONCENTRATION: 1 mL, 1×10^6 cells/mL in 70% DMEM, 20% FBS, 10% DMSO

Background

The MDA-MB-231 breast cancer cell line was obtained from a patient in 1973 at M. D. Anderson Cancer Center. With epithelial-like morphology, the MDA-MB-231 breast cancer cells appear phenotypically as spindle shaped cells. *In vitro*, the MDA-MB-231 cell line has an invasive phenotype. It has abundant activity in both the Boyden chamber chemoinvasion and chemotaxis assay. The MDA-MB-231 cell line is also able to grow on agarose, an indicator of transformation and tumorigenicity, and displays a relatively high colony forming efficiency. *In vivo*, the MDA-MB-231 cells form mammary fat pad tumors in nude mice. IV injection of cells into the tail vein of nude mice has been shown to produce experimental metastasis. Our MDA-MB-231/GFP-RFP cell line stably expresses GFP, RFP and Puromycin resistant genes that were introduced using lentivirus.

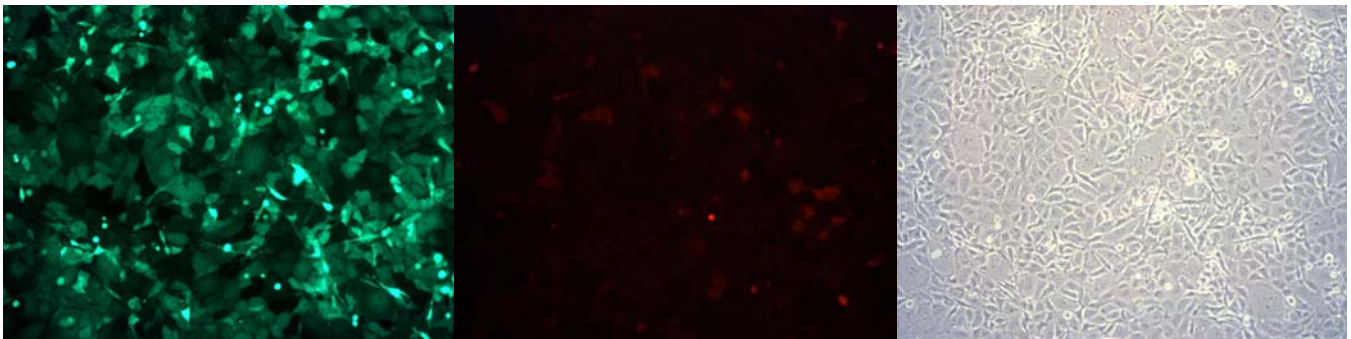


Figure 1. MDA-MB-231/GFP-RFP Cell Line. Left: GFP Fluorescence; Middle: RFP Fluorescence; Right: Phase Contrast.

Quality Control

This cryovial contains at least 1.0×10^6 MDA-MB-231/GFP-RFP cells as determined by morphology, trypan-blue dye exclusion, and viable cell count. The MDA-MB-231/GFP-RFP cells are tested free of microbial contamination.

Medium

1. Culture Medium: D-MEM (high glucose), 10% fetal bovine serum (FBS), 0.1 mM MEM Non-Essential Amino Acids (NEAA), 2 mM L-glutamine, 1% Pen-Strep.
2. Freeze Medium: 70% DMEM, 20% FBS, 10% DMSO.

Methods

Establishing MDA-MB-231/GFP-RFP Cultures from Frozen Cells

1. Place 10 mL of complete DMEM growth medium in a 50-mL conical tube. Thaw the frozen cryovial of cells within 1–2 minutes by gentle agitation in a 37°C water bath. Decontaminate the cryovial by wiping the surface of the vial with 70% (v/v) ethanol.
2. Transfer the thawed cell suspension to the conical tube containing 10 ml of growth medium.
3. Collect the cells by centrifugation at 1000 rpm for 5 minutes at room temperature. Remove the growth medium by aspiration.
4. Resuspend the cells in the conical tube in 15 mL of fresh growth medium by gently pipetting up and down.
5. Transfer the 15 mL of cell suspension to a T-75 tissue culture flask. Place the cells in a 37°C incubator at 5% CO₂.
6. Monitor cell density daily. Cells should be passaged when the culture reaches 95% confluence.

Warranty

These products are warranted to perform as described in their labeling and in Cell Biolabs literature when used in accordance with their instructions. THERE ARE NO WARRANTIES THAT EXTEND BEYOND THIS EXPRESSED WARRANTY AND CELL BIOLABS DISCLAIMS ANY IMPLIED WARRANTY OF MERCHANTABILITY OR WARRANTY OF FITNESS FOR PARTICULAR PURPOSE. CELL BIOLABS's sole obligation and purchaser's exclusive remedy for breach of this warranty shall be, at the option of CELL BIOLABS, to repair or replace the products. In no event shall CELL BIOLABS be liable for any proximate, incidental or consequential damages in connection with the products.

This product is for RESEARCH USE ONLY; not for use in diagnostic procedures.

Contact Information

Cell Biolabs, Inc.
7758 Arjons Drive
San Diego, CA 92126
Worldwide: +1 858-271-6500
USA Toll-Free: 1-888-CBL-0505
E-mail: tech@cellbiolabs.com
www.cellbiolabs.com

©2010-2011: Cell Biolabs, Inc. - All rights reserved. No part of these works may be reproduced in any form without permissions in writing.