

## 293/Luc Cell Line

**CATALOG NUMBER:** AKR-230

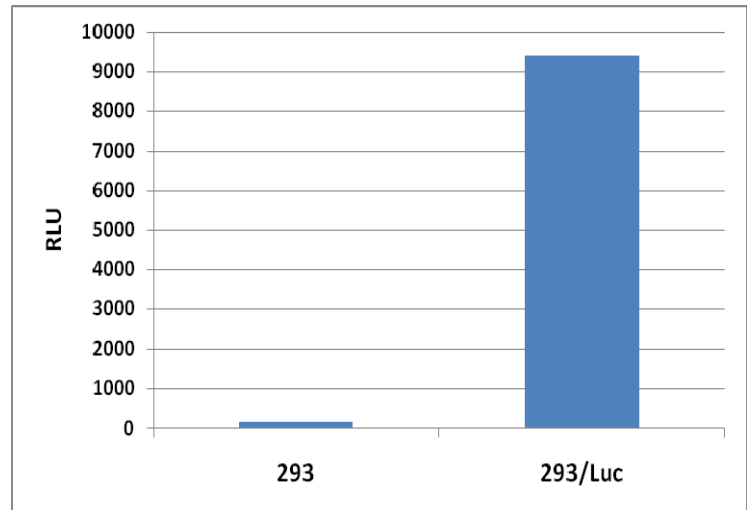
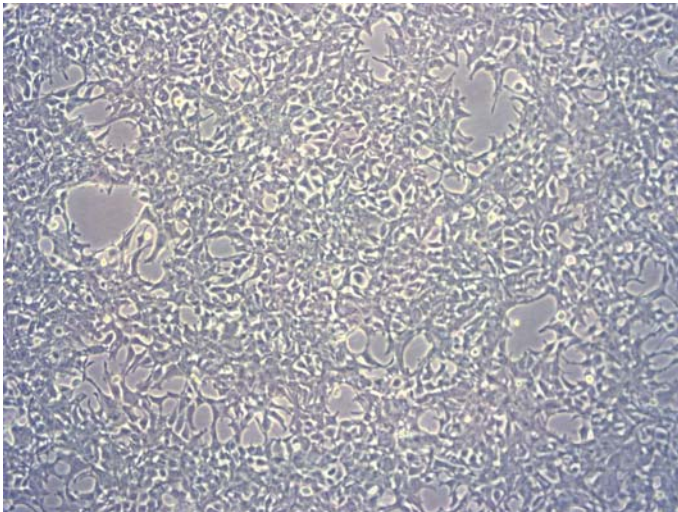
**STORAGE:** Liquid nitrogen

*Note: For best results begin culture of cells immediately upon receipt. If this is not possible, store at -80°C until first culture. Store subsequent cultured cells long term in liquid nitrogen.*

**QUANTITY & CONCENTRATION:** 1 mL,  $1 \times 10^6$  cells/mL in 70% DMEM, 20% FBS, 10% DMSO

### Background

The 293 cell line is a permanent line established from primary embryonic human kidney transformed with human adenovirus type 5 DNA. The genes encoded by the E1 region of adenovirus (E1a and E1b) are expressed in these cells and participate in transactivation of viral promoters, allowing these cells to produce high levels of protein. E1 also complements the E1-deletion in recombinant adenoviral vectors, allowing viral replication. Our 293/Luc cell line stably expresses firefly luciferase gene and Blasticidin resistant gene.



**Figure 1.** 293/Luc Cell Line. Left: Phase Contrast; Right: Luciferase Activity Assay.

### Quality Control

This cryovial contains at least  $1.0 \times 10^6$  293/Luc cells as determined by morphology, trypan-blue dye exclusion, and viable cell count. The 293/Luc cells are tested free of microbial contamination.

### Medium

1. Culture Medium: D-MEM (high glucose), 10% fetal bovine serum (FBS), 0.1 mM MEM Non-Essential Amino Acids (NEAA), 2 mM L-glutamine, 1% Pen-Strep, (optional) 10  $\mu$ g/mL Blasticidin.

2. Freeze Medium: 70% DMEM, 20% FBS, 10% DMSO.

## **Methods**

### **Establishing 293/Luc Cultures from Frozen Cells**

1. Place 10 mL of complete DMEM growth medium in a 50-mL conical tube. Thaw the frozen cryovial of cells within 1–2 minutes by gentle agitation in a 37°C water bath. Decontaminate the cryovial by wiping the surface of the vial with 70% (v/v) ethanol.
2. Transfer the thawed cell suspension to the conical tube containing 10 ml of growth medium.
3. Collect the cells by centrifugation at 1000 rpm for 5 minutes at room temperature. Remove the growth medium by aspiration.
4. Resuspend the cells in the conical tube in 15 mL of fresh growth medium by gently pipetting up and down.
5. Transfer the 15 mL of cell suspension to a T-75 tissue culture flask. Place the cells in a 37°C incubator at 5% CO<sub>2</sub>.
6. Monitor cell density daily. Cells should be passaged when the culture reaches 95% confluence.

## **Warranty**

These products are warranted to perform as described in their labeling and in Cell Biolabs literature when used in accordance with their instructions. THERE ARE NO WARRANTIES THAT EXTEND BEYOND THIS EXPRESSED WARRANTY AND CELL BIOLABS DISCLAIMS ANY IMPLIED WARRANTY OF MERCHANTABILITY OR WARRANTY OF FITNESS FOR PARTICULAR PURPOSE. CELL BIOLABS's sole obligation and purchaser's exclusive remedy for breach of this warranty shall be, at the option of CELL BIOLABS, to repair or replace the products. In no event shall CELL BIOLABS be liable for any proximate, incidental or consequential damages in connection with the products.

*This product is for RESEARCH USE ONLY; not for use in diagnostic procedures.*

## **Contact Information**

Cell Biolabs, Inc.  
7758 Arjons Drive  
San Diego, CA 92126  
Worldwide: +1 858-271-6500  
USA Toll-Free: 1-888-CBL-0505  
E-mail: [tech@cellbiolabs.com](mailto:tech@cellbiolabs.com)  
[www.cellbiolabs.com](http://www.cellbiolabs.com)

©2010-2011: Cell Biolabs, Inc. - All rights reserved. No part of these works may be reproduced in any form without permissions in writing.