

Platinum-E Retroviral Packaging Cell Line, Ecotropic

CATALOG NUMBER: RV-101

STORAGE: Liquid nitrogen

Note: For best results begin culture of cells immediately upon receipt. If this is not possible, store at -80°C until first culture. Store subsequent cultured cells long term in liquid nitrogen.

QUANTITY & CONCENTRATION: 1.0 mL, $>3 \times 10^6$ cells/mL in DMEM, 20% FBS, and 10% DMSO

Background

Retroviruses are efficient tools for delivering heritable genes into the genome of dividing cells. However, conventional NIH-3T3 based retroviral packaging cell lines have limited stability and produce low viral yields, mainly due to poor expression level of the retroviral structure proteins (gag, pol, env) in the packaging cells.

The Platinum-E (Plat-E) Cell Line, a potent retrovirus packaging cell line based on the 293T cell line, was generated using novel packaging constructs with an EF1 α promoter to ensure longer stability and high-yield retroviral structure protein expression (gag, pol, ecotropic env). Plat-E cells can be kept in good condition for at least 4 months in the presence of drug selection, and can produce retroviruses with an average titer of 1×10^7 infectious units/mL by transient transfection. In addition, replication competent retroviruses (RCR) are virtually nonexistent because only coding sequences of viral structural genes are used, avoiding any unnecessary retroviral sequences.

The Plat-E cell line is designed for rapid, transient production of high-titer ecotropic retrovirus.

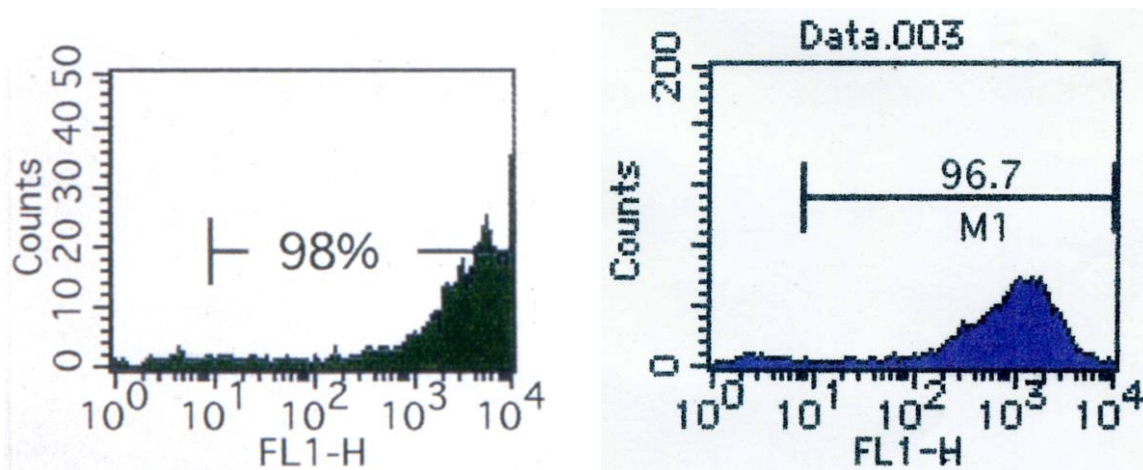


Figure 1. NIH3T3 cells (left) and mouse ProB Ba/F3 cells (right) were infected with GFP retrovirus supernatant produced in Plat-E cells after transfection with pMX-GFP.

Medium

1. Culture Medium: DMEM, 10% fetal bovine serum (FBS), 1 µg/mL puromycin, 10 µg/mL blasticidin, penicillin and streptomycin
2. Freeze Medium: 70% DMEM, 20% FBS, 10% DMSO

Methods

I. Establishing Plat-E Cultures from Frozen Cells

1. After quickly thawing the cells in a 37°C water bath, immediately transfer the thawed cell suspension into a 15 mL tube containing 10 mL of culture medium.
2. Centrifuge the tube for 5 min at 1300 to 1500 rpm.
3. Discard the supernatant and break the cell pellet by finger tapping.
4. Add a few drops of culture medium with gentle shaking and finger tap the tube a few times.
5. Add 2 mL of culture medium to the tube and gently pipet the cell suspension up and down twice.
6. Transfer the cell suspension to a 10 cm culture dish (Falcon® #3003 works well) containing 8 mL of culture medium.
7. Swirl the culture plate well to mix the cells, then incubate the cells for three days before expansion.

Important Notes:

- ***Don't change the culture medium during the first three days. It is normal to see some cells floating after the first 24 hours.***
- ***Don't culture cells to complete confluency. Split cells 4X to 6X every two to three days when the culture reaches 70-90% confluency.***

II. Splitting the Cells

Note: Avoid forming bubbles as much as possible during this procedure.

1. Wash cells once with PBS.
2. Add 4 mL of 0.05% Trypsin/0.5 mM EDTA solution to a 10 cm dish and incubate at 37°C for 3-5 min.
3. Remove the cells from the dish surface by tapping the rim of the culture dish.
4. Transfer 10 mL of the culture medium to a 50 mL tube.
5. Using the same pipette with some residual culture medium, wash the dish surface gently three times in 4 mL of the Trypsin/EDTA solution.
6. Gently pipette the cell suspension up and down 7 times and transfer the cell suspension into the 50 mL tube containing 10 mL medium from step 4.
7. Centrifuge the cells for 5 min at 1300-1500 rpm.
8. Discard the supernatant and break the cell pellet by finger tapping.
9. Add a few drops of culture medium with gentle shaking and finger tap the tube a few times.
10. Add 5 mL of culture medium and gently pipet the cell suspension up and down twice.
11. Add 15 mL of culture medium, then count and seed the cells. Typically 10^7 cells can be harvested from one 10 cm culture dish.

Transfection

1. Seed 2×10^6 cells in a 60 mm culture dish without antibiotics including puromycin and blasticidin one day before transfection.
2. After 16 to 24 hours, start transfection when the culture becomes 70-80% confluent.

Note: We suggest transfecting cells with FuGENE® Transfection Reagent (Promega) or Lipofectamine™ Plus (Invitrogen). For example, 3 µg retroviral expression plasmid is mixed with 9 µL FuGENE® Transfection Reagent according to the manufacturer's recommendation. The mixed DNA- FuGENE® complex is added by dropwise into the culture media.

3. Harvest retroviral supernatant 48 hours after transfection.

References

1. Morita, S., Kojim, T., and Kitamura, T. (2000) *Gene Therapy* **7**: 1063-1066.
2. Takahashi, K. and Yamanaka, S. (2006) *Cell* **126**: 663-676.

Recent Product Citations

1. Larange, A. et al. (2023). A regulatory circuit controlled by extranuclear and nuclear retinoic acid receptor α determines T cell activation and function. *Immunity*. **56**(9):2054-2069.e10. doi: 10.1016/j.immuni.2023.07.017.
2. Rohatgi, N. et al. (2023). BAP1 promotes osteoclast function by metabolic reprogramming. *Nat Commun*. **14**(1):5923. doi: 10.1038/s41467-023-41629-4.
3. Ebner, J. et al. (2023). ABCC1 and glutathione metabolism limit the efficacy of BCL-2 inhibitors in acute myeloid leukemia. *Nat Commun*. **14**(1):5709. doi: 10.1038/s41467-023-41229-2.
4. Ceglia, S. et al. (2023). An epithelial cell-derived metabolite tunes immunoglobulin A secretion by gut-resident plasma cells. *Nat Immunol*. **24**(3):531-544. doi: 10.1038/s41590-022-01413-w.
5. Dou, Y. et al. (2023). Optogenetic engineering of STING signaling allows remote immunomodulation to enhance cancer immunotherapy. *Nat Commun*. **14**(1):5461. doi: 10.1038/s41467-023-41164-2.
6. Vainorius, G. et al. (2023). Ascl1 and Ngn2 convert mouse embryonic stem cells to neurons via functionally distinct paths. *Nat Commun*. **14**(1):5341. doi: 10.1038/s41467-023-40803-y.
7. Sekiguchi, Y. et al. (2023). Engineering Critical Residues of SOX9 Discovers a Variant with Potent Capacity to Induce Chondrocytes. *Stem Cells*. doi: 10.1093/stmcls/sxad066.
8. Pavlakis, E. et al. (2023). Mutant p53-ENTPD5 control of the calnexin/calreticulin cycle: a druggable target for inhibiting integrin- α 5-driven metastasis. *J Exp Clin Cancer Res*. **42**(1):203. doi: 10.1186/s13046-023-02785-z.
9. Berková, L. et al. (2023). Terminal differentiation of villus tip enterocytes is governed by distinct Tgf β superfamily members. *EMBO Rep*. **24**(9):e56454. doi: 10.15252/embr.202256454.
10. Meyer, L.M. et al. (2023). Deciphering the mitophagy receptor network identifies a crucial role for OPTN (optineurin) in acute myeloid leukemia. *Autophagy*. doi: 10.1080/15548627.2023.2230839.
11. Torcal Garcia, G. et al. (2023). Carm1-arginine methylation of the transcription factor C/EBP α regulates transdifferentiation velocity. *Elife*. **12**:e83951. doi: 10.7554/eLife.83951.
12. Zhang, Y. et al. (2023). Net39 protects muscle nuclei from mechanical stress during the pathogenesis of Emery-Dreifuss muscular dystrophy. *J Clin Invest*. **133**(13):e163333. doi: 10.1172/JCI163333.
13. Pachmayr, L.O. et al. (2023). Unbiased chemokine receptor screening reveals similar efficacy of lymph node- and tumor-targeted T cell immunotherapy. *Cancer Immunol Immunother*. doi: 10.1007/s00262-023-03472-w.
14. Sato, S. et al. (2023). The circadian clock CRY1 regulates pluripotent stem cell identity and somatic cell reprogramming. *Cell Rep*. **42**(6):112590. doi: 10.1016/j.celrep.2023.112590.

15. Salemme, V. et al. (2023). p140Cap inhibits β -Catenin in the breast cancer stem cell compartment instructing a protective anti-tumor immune response. *Nat Commun.* **14**(1):2350. doi: 10.1038/s41467-023-37824-y.
16. Tabata, K. et al. (2023). Monitoring and assessment of lysosomal membrane damage in cultured cells using the high-content imager. *STAR Protoc.* **4**(2):102236. doi: 10.1016/j.xpro.2023.102236.
17. Jin, J. et al. (2023). CISH impairs lysosomal function in activated T cells resulting in mitochondrial DNA release and inflamming. *Nat Aging.* **3**(5):600-616. doi: 10.1038/s43587-023-00399-w.
18. Bhatia, V. et al. (2023). Targeting advanced prostate cancer with STEAP1 chimeric antigen receptor T cell and tumor-localized IL-12 immunotherapy. *Nat Commun.* **14**(1):2041. doi: 10.1038/s41467-023-37874-2.
19. Read, K.A. et al. (2023). Aiolos represses CD4⁺ T cell cytotoxic programming via reciprocal regulation of TFH transcription factors and IL-2 sensitivity. *Nat Commun.* **14**(1):1652. doi: 10.1038/s41467-023-37420-0.
20. Pham, D. et al. (2023). Batf stabilizes Th17 cell development via impaired Stat5 recruitment of Ets1-Runx1 complexes. *EMBO J.* **42**(8):e109803. doi: 10.15252/embj.2021109803.
21. Hahn, A.M. et al. (2023). A monoclonal Trd chain supports the development of the complete set of functional $\gamma\delta$ T cell lineages. *Cell Rep.* **42**(3):112253. doi: 10.1016/j.celrep.2023.112253.
22. Liu, Q. et al. (2023). Tcf21 marks visceral adipose mesenchymal progenitors and functions as a rate-limiting factor during visceral adipose tissue development. *Cell Rep.* **42**(3):112166. doi: 10.1016/j.celrep.2023.112166.
23. Diril, M. et al. (2023). Genetic dissection of the Mastl-Arpp19/Ensa-PP2A-B55 δ pathway in mammalian cells. *TJB.* **48**(2):190-202. doi: 10.1515/tjb-2022-0191.
24. Tang, J. et al. (2023). Runx3-overexpression cooperates with ex vivo AKT inhibition to generate receptor-engineered T cells with better persistence, tumor-residency, and antitumor ability. *J Immunother Cancer.* **11**(2):e006119. doi: 10.1136/jitc-2022-006119.
25. Oh S. et al. (2023). Precision targeting of autoantigen-specific B cells in muscle-specific tyrosine kinase myasthenia gravis with chimeric autoantibody receptor T cells. *Nat Biotechnol.* doi: 10.1038/s41587-022-01637-z.
26. Briukhovetska, D. et al. (2023). T cell-derived interleukin-22 drives the expression of CD155 by cancer cells to suppress NK cell function and promote metastasis. *Immunity.* **56**(1):143-161.e11. doi: 10.1016/j.immuni.2022.12.010.
27. Saltukoglu, D. et al. (2023). Plasma membrane topography governs the 3D dynamic localization of IgM B cell antigen receptor clusters. *EMBO J.* **42**(4):e112030. doi: 10.15252/embj.2022112030.
28. Caravia, X.M. et al. (2022). Loss of function of the nuclear envelope protein LEMD2 causes DNA damage-dependent cardiomyopathy. *J Clin Invest.* **132**(22):e158897. doi: 10.1172/JCI158897.
29. Zenke, S. et al. (2022). Differential trafficking of ligands trogocytosed via CD28 versus CTLA4 promotes collective cellular control of co-stimulation. *Nat Commun.* **13**(1):6459. doi: 10.1038/s41467-022-34156-1.
30. Jain, P. et al. (2022). Discovery and functional characterization of the oncogenicity and targetability of a novel NOTCH1-ROS1 gene fusion in pediatric angiosarcoma. *Cold Spring Harb Mol Case Stud.* **8**(6):a006222. doi: 10.1101/mcs.a006222.

Warranty

These products are warranted to perform as described in their labeling and in Cell Biolabs literature when used in accordance with their instructions. THERE ARE NO WARRANTIES THAT EXTEND BEYOND THIS EXPRESSED WARRANTY

AND CELL BIOLABS DISCLAIMS ANY IMPLIED WARRANTY OF MERCHANTABILITY OR WARRANTY OF FITNESS FOR PARTICULAR PURPOSE. CELL BIOLABS 's sole obligation and purchaser's exclusive remedy for breach of this warranty shall be, at the option of CELL BIOLABS, to repair or replace the products. In no event shall CELL BIOLABS be liable for any proximate, incidental or consequential damages in connection with the products.

License Information

This licensed product is intended for ACADEMIC, GOVERNMENT AND NON-PROFIT RESEARCH USE ONLY; not for use in diagnostic or therapeutic procedures. The product may not be transferred, sold, or otherwise provided to another laboratory except by an authorized distributor of Cell Biolabs, Inc.

Use of this product by Biotechnology and Pharmaceutical companies requires a license for all fields of use including research. Please contact:

Director of Business Development
Cell Biolabs, Inc.
busdev@cellbiolabs.com

Contact Information

Cell Biolabs, Inc.
5628 Copley Drive
San Diego, CA 92111
Worldwide: +1 858 271-6500
USA Toll-Free: 1-888-CBL-0505
E-mail: tech@cellbiolabs.com
www.cellbiolabs.com

©2008-2024: Cell Biolabs, Inc. - All rights reserved. No part of these works may be reproduced in any form without permissions in writing.