

## Platinum-GP Retroviral Packaging Cell Line, Pantropic

**CATALOG NUMBER:** RV-103

**STORAGE:** Liquid nitrogen

*Note: For best results begin culture of cells immediately upon receipt. If this is not possible, store at -80°C until first culture. Store subsequent cultured cells long term in liquid nitrogen.*

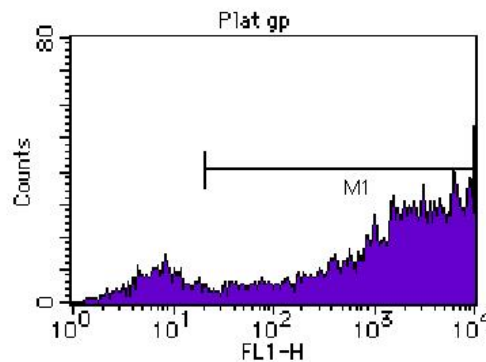
**QUANTITY & CONCENTRATION:** 1.0 mL, >3 X 10<sup>6</sup> cells/mL in DMEM, 20% FBS and 10% DMSO

### **Background**

Retroviruses are efficient tools for delivering heritable genes into the genome of dividing cells. However, conventional NIH-3T3 based retroviral packaging cell lines have limited stability and produce low viral yields, mainly due to poor expression level of the retroviral structure proteins (gag, pol, env) in the packaging cells.

The Platinum-GP (Plat-GP) Cell Line, a potent retrovirus packaging cell line based on the 293T cell line, was generated using novel packaging constructs with an EF1 $\alpha$  promoter to ensure longer stability and high-yield retroviral structure protein expression (gag and pol). Plat-GP cells can be kept in good condition for at least 4 months in the presence of drug selection, and can produce retroviruses with an average titer of 1 x 10<sup>7</sup> infectious units/mL by transient transfection. In addition, replication competent retroviruses (RCR) are virtually nonexistent because only coding sequences of viral structural genes are used, avoiding any unnecessary retroviral sequences.

The Plat-GP cell line allows you to select the envelop according to the tropism needed. The viral env gene, such as VSV-G, must be cotransfected with the retroviral expression vector. The Plat-GP cell line is designed for rapid, transient production of high-titer retrovirus.



**Figure 1.** Jurkat cells were infected with GFP retrovirus supernatant produced in Plat-GP cells after transfection.

## Medium

1. Culture Medium: DMEM, 10% fetal bovine serum (FBS), 10 µg/mL blasticidin, penicillin and streptomycin
2. Freeze Medium: 70% DMEM, 20% FBS, 10% DMSO

## Methods

### **I. Establishing Plat-GP Cultures from Frozen Cells**

1. After quickly thawing the cells in a 37°C water bath, immediately transfer the thawed cell suspension into a 15 mL tube containing 10 mL of culture medium.
2. Centrifuge the tube for 5 min at 1300 to 1500 rpm.
3. Discard the supernatant and break the cell pellet by finger tapping.
4. Add a few drops of culture medium with gentle shaking and finger tap the tube a few times.
5. Add 2 mL of culture medium to the tube and gently pipet the cell suspension up and down twice.
6. Transfer the cell suspension to a 10 cm culture dish (Falcon® #3003 works well) containing 8 mL of culture medium.
7. Swirl the culture plate well to mix the cells, then incubate the cells for three days before expansion.

#### ***Important Notes:***

- ***Don't change the culture medium during the first three days. It is normal to see some cells floating after the first 24 hours.***
- ***Don't culture cells to complete confluency. Split cells 4X to 6X every two to three days when the culture reaches 70-90% confluency.***

### **II. Splitting the Cells**

*Note: Avoid forming bubbles as much as possible during this procedure.*

1. Wash cells once with PBS.
2. Add 4 mL of 0.05% Trypsin/0.5 mM EDTA solution to a 10 cm dish and incubate at 37°C for 3-5 min.
3. Remove the cells from the dish surface by tapping the rim of the culture dish.
4. Transfer 10 mL of the culture medium to a 50 mL tube.
5. Using the same pipette with some residual culture medium, wash the dish surface gently three times in 4 mL of the Trypsin/EDTA solution.
6. Gently pipette the cell suspension up and down 7 times and transfer the cell suspension into the 50 mL tube containing 10 mL medium from step 4.
7. Centrifuge the cells for 5 min at 1300-1500 rpm.
8. Discard the supernatant and break the cell pellet by finger tapping.
9. Add a few drops of culture medium with gentle shaking and finger tap the tube a few times.
10. Add 5 mL of culture medium and gently pipet the cell suspension up and down twice.
11. Add 15 mL of culture medium, then count and seed the cells. Typically  $10^7$  cells can be harvested from one 10 cm culture dish.

## Transfection

1. Seed  $2 \times 10^6$  cells in a 60 mm culture dish without antibiotics including blasticidin one day before transfection.
2. After 16 to 24 hours, start transfection when the culture becomes 70-80% confluent.

Note: We suggest transfecting cells with FuGENE® Transfection Reagent (Roche Applied Science) or Lipofectamine™ Plus (Invitrogen). For example, 3 µg DNA is mixed with 9 µL FuGENE® Transfection Reagent according to the manufacturer's recommendation. The mixed DNA- FuGENE® complex is added by dropwise into the culture media.

3. Harvest retroviral supernatant 48 hours after transfection.

## **Reference**

1. Morita, S., Kojim, T., and Kitamura, T. (2000) *Gene Therapy* 7: 1063-1066.

## **Recent Product Citations**

1. Miyake, K. et al. (2023). A cancer-associated METTL14 mutation induces aberrant m6A modification, affecting tumor growth. *Cell Rep.* **42**(7):112688. doi: 10.1016/j.celrep.2023.112688.
2. Nishi, H. et al. (2023). Hypoxia-induced paclitaxel resistance in cervical cancer modulated by miR-100 targeting of USP15. *Gynecol Oncol Rep.* **45**:101138. doi: 10.1016/j.gore.2023.101138.
3. Devant, P. et al. (2023). Gasdermin D pore-forming activity is redox-sensitive. *Cell Rep.* **42**(1):112008. doi: 10.1016/j.celrep.2023.112008.
4. Mori, Y. et al. (2022). Membrane Sphingomyelin in Host Cells Is Essential for Nucleocapsid Penetration into the Cytoplasm after Hemifusion during Rubella Virus Entry. *mBio*. doi: 10.1128/mbio.01698-22.
5. Suzuki, Y. et al. (2022). Design and lyophilization of lipid nanoparticles for mRNA vaccine and its robust immune response in mice and nonhuman primates. *Mol Ther Nucleic Acids*. doi: 10.1016/j.omtn.2022.09.017.
6. Ochi, T. et al. (2022). Exploring the mechanistic link between SF3B1 mutation and ring sideroblast formation in myelodysplastic syndrome. *Sci Rep.* **12**(1):14562. doi: 10.1038/s41598-022-18921-2.
7. Tanabe, K. et al. (2022). Generation of functional human oligodendrocytes from dermal fibroblasts by direct lineage conversion. *Development.* **149**(20):dev199723. doi: 10.1242/dev.199723.
8. Narita, S. et al. (2022). Direct reprogramming of adult adipose-derived regenerative cells toward cardiomyocytes using six transcriptional factors. *iScience.* doi: 10.1016/j.isci.2022.104651.
9. Köferle, A. et al. (2022). Interrogation of cancer gene dependencies reveals paralog interactions of autosome and sex chromosome-encoded genes. *Cell Rep.* **39**(2):110636. doi: 10.1016/j.celrep.2022.110636.
10. Okuya, K. et al. (2022). Multiple Routes of Antibody-Dependent Enhancement of SARS-CoV-2 Infection. *Microbiol Spectr.* **10**(2):1-15. doi: 10.1128/spectrum.01553-21.
11. Saito, T. et al. (2022). Molecular Mechanisms Underlying the Cellular Entry and Host Range Restriction of Lujo Virus. *mBio.* **13**(1):e0306021. doi: 10.1128/mbio.03060-21.
12. Ogawa, H. et al. (2022). Nectin-2 Acts as a Viral Entry Mediated Molecule That Binds to Human Herpesvirus 6B Glycoprotein B. *Viruses.* **14**(1):160. doi: 10.3390/v14010160.
13. Yun, W. et al. (2022). OCT4-induced oligodendrocyte progenitor cells promote remyelination and ameliorate disease. *NPJ Regen Med.* **7**(1):4. doi: 10.1038/s41536-021-00199-z.
14. Roth, M. et al. (2021). Distinct antiretroviral mechanisms elicited by a viral mutagen. *J Mol Biol.* doi: 10.1016/j.jmb.2021.167111.

15. Maemura, T. et al. (2021). Antibody-Dependent Enhancement of SARS-CoV-2 Infection Is Mediated by the IgG Receptors Fc $\gamma$ RIIA and Fc $\gamma$ RIIIA but Does Not Contribute to Aberrant Cytokine Production by Macrophages. *mBio*. doi: 10.1128/mBio.01987-21.
16. Evavold, C.L. et al. (2021). Control of gasdermin D oligomerization and pyroptosis by the Regulator-Rag-mTORC1 pathway. *Cell*. doi: 10.1016/j.cell.2021.06.028.
17. Choi, Y.J. et al. (2021). WNT5A from the fetal liver vascular niche supports human fetal liver hematopoiesis. *Stem Cell Res Ther*. **12**(1):321. doi: 10.1186/s13287-021-02380-z.
18. Komorizono, R. et al. (2020). Evolutionary Selection of the Nuclear Localization Signal in the Viral Nucleoprotein Leads to Host Adaptation of the Genus Orthobornavirus. *Viruses*. **12**(11):E1291. doi: 10.3390/v12111291.
19. Inada, H. et al. (2020). Direct reprogramming of human umbilical vein- and peripheral blood-derived endothelial cells into hepatic progenitor cells. *Nat Commun*. **11**(1):5292. doi: 10.1038/s41467-020-19041-z.
20. Manzoor, R. et al. (2020). A novel mechanism underlying antiviral activity of an influenza virus M2-specific antibody. *J Virol*. doi: 10.1128/JVI.01277-20.
21. Kuroda, M. et al. (2020). HER2-mediated enhancement of Ebola virus entry. *PLoS Pathog*. **16**(10):e1008900. doi: 10.1371/journal.ppat.1008900.
22. Takadate, Y. et al. (2020). Receptor-Mediated Host Cell Preference of a Bat-Derived Filovirus, Lloviu Virus. *Microorganisms*. **8**(10):E1530. doi: 10.3390/microorganisms8101530.
23. Do, E.K. et al. (2020). Kap1 regulates the self-renewal of embryonic stem cells and cellular reprogramming by modulating Oct4 protein stability. *Cell Death Differ*. doi: 10.1038/s41418-020-00613-x.
24. Kuroda, M. et al. (2020). Identification of interferon-stimulated genes that attenuate Ebola virus infection. *Nat Commun*. **11**(1):2953. doi: 10.1038/s41467-020-16768-7.
25. Kumazaki, M. et al. (2020). Cell-type specific tumorigenesis with Ras oncogenes in human lung epithelial cells. *Biochem Biophys Res Commun*. pii: S0006-291X(20)30394-6. doi: 10.1016/j.bbrc.2020.02.113.
26. Takadate, Y. et al. (2020). Niemann-Pick C1 Heterogeneity of Bat Cells Controls Filovirus Tropism. *Cell Rep*. **30**(2):308-319.e5. doi: 10.1016/j.celrep.2019.12.042.
27. Shimizu, K. et al. (2019). Fabrication of contractile skeletal muscle tissues using directly converted myoblasts from human fibroblasts. *J Biosci Bioeng*. pii: S1389-1723(19)30922-3. doi: 10.1016/j.jbiosc.2019.11.013.
28. Inoue, Y. et al. (2019). Direct conversion of fibroblasts into urothelial cells that may be recruited to regenerating mucosa of injured urinary bladder. *Sci Rep*. **9**(1):13850. doi: 10.1038/s41598-019-50388-6.
29. Meyer, K. et al. (2019). REST and Neural Gene Network Dysregulation in iPSC Models of Alzheimer's Disease. *Cell Rep*. **26**(5):1112-1127.e9. doi: 10.1016/j.celrep.2019.01.023.
30. Hafner-Bratkovič, I. et al. (2018). NLRP3 lacking the leucine-rich repeat domain can be fully activated via the canonical inflammasome pathway. *Nat Commun*. **9**(1):5182. doi: 10.1038/s41467-018-07573-4.

## **Warranty**

These products are warranted to perform as described in their labeling and in Cell Biolabs literature when used in accordance with their instructions. THERE ARE NO WARRANTIES THAT EXTEND BEYOND THIS EXPRESSED WARRANTY AND CELL BIOLABS DISCLAIMS ANY IMPLIED WARRANTY OF MERCHANTABILITY OR WARRANTY OF FITNESS FOR PARTICULAR PURPOSE. CELL BIOLABS's sole obligation and purchaser's exclusive remedy for breach

of this warranty shall be, at the option of CELL BIOLABS, to repair or replace the products. In no event shall CELL BIOLABS be liable for any proximate, incidental or consequential damages in connection with the products.

### **License Information**

This licensed product is intended for ACADEMIC, GOVERNMENT AND NON-PROFIT RESEARCH USE ONLY; not for use in diagnostic or therapeutic procedures. The product may not be transferred, sold, or otherwise provided to another laboratory except by an authorized distributor of Cell Biolabs, Inc.

Use of this product by Biotechnology and Pharmaceutical companies requires a license for all fields of use including research. Please contact:

Director of Business Development  
Cell Biolabs, Inc.  
[busdev@cellbiolabs.com](mailto:busdev@cellbiolabs.com)

### **Contact Information**

Cell Biolabs, Inc.  
5628 Copley Drive  
San Diego, CA 92111  
Worldwide: +1 858 271-6500  
USA Toll-Free: 1-888-CBL-0505  
E-mail: [tech@cellbiolabs.com](mailto:tech@cellbiolabs.com)  
[www.cellbiolabs.com](http://www.cellbiolabs.com)

©2008-2024: Cell Biolabs, Inc. - All rights reserved. No part of these works may be reproduced in any form without permissions in writing.