

---

Product Manual

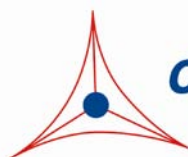
# OxiSelect™ Oxidative DNA Damage ELISA Kit (8-OHdG Quantitation)

## Catalog Number

STA-320	96 assays
STA-320-5	5 x 96 assays

**FOR RESEARCH USE ONLY**  
Not for use in diagnostic procedures

---



**CELL BIOLABS, INC.**  
*Creating Solutions for Life Science Research*

## **Introduction**

Free radicals and other reactive species are constantly generated *in vivo* and cause oxidative damage to biomolecules, a process held in check only by the existence of multiple antioxidant and repair systems as well as the replacement of damaged nucleic acids, proteins and lipids. DNA is probably the most biologically significant target of oxidative attack, and it is widely thought that continuous oxidative damage to DNA is a significant contributor to the age-related development of the major cancers, such as those of the colon, breast, rectum, and prostate. Among numerous types of oxidative DNA damage, the formation of 8-hydroxydeoxyguanosine (8-OHdG) is a ubiquitous marker of oxidative stress. 8-OHdG, one of the oxidative DNA damage byproducts, is physiologically formed and enhanced by chemical carcinogens. During the repair of damaged DNA *in vivo* by exonucleases, the resulting 8-OH-dG is excreted without further metabolism into urine.

The OxiSelect™ Oxidative DNA Damage ELISA Kit is a competitive enzyme immunoassay developed for rapid detection and quantitation of 8-OHdG in urine, serum, or other cell or tissue DNA samples. The quantity of 8-OHdG in unknown sample is determined by comparing its absorbance with that of a known 8-OHdG standard curve. The kit has an 8-OHdG detection sensitivity range of 100 pg/mL to 20 ng/mL. Each kit provides sufficient reagents to perform up to 96 assays, including standard curve and unknown samples.

## **Assay Principle**

The OxiSelect™ Oxidative DNA Damage ELISA kit is a competitive ELISA for the quantitative measurement of 8-OHdG. The unknown 8-OHdG samples or 8-OHdG standards are first added to an 8-OHdG/BSA conjugate preabsorbed microplate. After a brief incubation, an anti-8-OHdG monoclonal antibody is added, followed by an HRP conjugated secondary antibody. The 8-OHdG content in unknown samples is determined by comparison with predetermined 8-OHdG standard curve.

## **Related Products**

1. STA-321: OxiSelect™ DNA Double-Strand Break (DSB) Staining Kit
2. STA-324: OxiSelect™ Oxidative DNA Damage Quantitation Kit (AP sites)
3. STA-325: OxiSelect™ Oxidative RNA Damage ELISA Kit (8-OHG Quantitation)
4. STA-350: OxiSelect™ Comet Assay Kit (3-Well Slides), 15 Assays
5. STA-351: OxiSelect™ Comet Assay Kit (3-Well Slides), 75 Assays
6. STA-352: OxiSelect™ Comet Assay Slides (3-Well), 5 Slides
7. STA-353: OxiSelect™ Comet Assay Slides (3-Well), 25 Slides
8. STA-354: OxiSelect™ Comet Assay Control Cells
9. STA-355: OxiSelect™ 96-Well Comet Assay Kit
10. STA-356: OxiSelect™ 96-Well Comet Assay Slide

## **Kit Components**

### **Box 1 (shipped at room temperature)**

1. 96-well Protein Binding Plate (Part No. 231001): One strip-well 96 well microplate.
2. Anti-8-OHdG Antibody (Part No. 232002): One 15  $\mu$ L vial of anti-8-OHdG.
3. Secondary Antibody, HRP Conjugate (1000X) (Part No. 230003): One 20  $\mu$ L vial.
4. Assay Diluent (Part No. 310804): One 50 mL bottle.
5. 10X Wash Buffer (Part No. 310806): One 100 mL bottle.
6. Substrate Solution (Part No. 310807): One 12 mL amber bottle.
7. Stop Solution (Part. No. 310808): One 12 mL bottle.
8. 8-OHdG Standard (Part No. 232003): One 100  $\mu$ L vial of 2  $\mu$ g/mL 8-OHdG in 1X PBS, 0.1% BSA.

### **Box 2 (shipped on blue ice packs)**

1. 8-OHdG Conjugate (Part No. 232001): One 20  $\mu$ L vial of 8-OHdG-BSA conjugate at 1.0 mg/mL in PBS.

## **Materials Not Supplied**

1. 8-OHdG samples such as serum, plasma, urine, or DNA extracted from cells or tissues
2. DNA Extraction Kit
3. Sodium Acetate, pH 5.2
4. Tris Buffer, pH7.5
5. Nuclease P1, Alkaline Phosphatase
6. 10 kDa molecular weight cutoff (MWCO) centrifuge spin filter (e.g. Amicon Ultra 0.5mL)
7. 10  $\mu$ L to 1000  $\mu$ L adjustable single channel micropipettes with disposable tips
8. 50  $\mu$ L to 300  $\mu$ L adjustable multichannel micropipette with disposable tips
9. Multichannel micropipette reservoir
10. Microplate reader capable of reading at 450 nm (620 nm as optional reference wave length)

## **Storage**

Upon receipt, aliquot and store the 8-OHdG Standard at  $-20^{\circ}\text{C}$  and the 8-OHdG Conjugate at  $-80^{\circ}\text{C}$  to avoid multiple freeze/thaw cycles. Store all other components at  $4^{\circ}\text{C}$ .

## **Preparation of Reagents**

- 8-OHdG Coated Plate: Dilute the proper amount of 8-OHdG Conjugate (1 mg/mL) to **1 µg/mL** in 1X PBS. Add 100 µL of the **1 µg/mL** 8-OHdG Conjugate to each well and incubate overnight at 4°C. Remove the 8-OHdG coating solution and wash once with dH<sub>2</sub>O. Blot plate on paper towels to remove excess fluid. Add 200 µL of Assay Diluent to each well and block for 1 hr at room temperature. Transfer the plate to 4°C and remove the Assay Diluent immediately before use.

*Note: The 8-OHdG coated wells are not stable and should be used within 24 hrs after coating. Only coat the number of wells to be used immediately.*

- 1X Wash Buffer: Dilute the 10X Wash Buffer to 1X with deionized water. Stir to homogeneity.
- Anti-8-OHdG Antibody and Secondary Antibody: Immediately before use dilute the Anti-8-OHdG Antibody 1:500 and Secondary Antibody 1:1000 with Assay Diluent. Do not store diluted solutions.

## **Preparation of Standard Curve**

Prepare a dilution series of 8-OHdG standards in the concentration range of 0 ng/mL to 20 ng/mL by diluting the 8-OHdG Standard in Assay Diluent (Table 1).

<b>Standard Tubes</b>	<b>8-OHdG Standard (µL)</b>	<b>Assay Diluent (µL)</b>	<b>8-OHdG (ng/mL)</b>
1	10	990	20
2	500 of Tube #1	500	10
3	500 of Tube #2	500	5
4	500 of Tube #3	500	2.5
5	500 of Tube #4	500	1.25
6	500 of Tube #5	500	0.625
7	500 of Tube #6	500	0.313
8	500 of Tube #7	500	0.156
9	500 of Tube #8	500	0.078
10	0	500	0

**Table 1. Preparation of 8-OHdG Standards**

## **Preparation of Samples**

### **I. Urine, Plasma or Serum Samples**

Clear urine, plasma or serum samples can be diluted in Assay Diluent and used directly in the assay. Samples containing precipitates should be centrifuged at 3000 g for 10 minutes, or filtered through 0.45 µm filter, prior to use in the assay.

*Note: All mouse and rat serum and plasma samples must be filtered using a 10kDa spin filter prior to testing.*

## **II. Cell or Tissue DNA Samples**

1. Extract DNA from cell or tissue samples by a desired method or commercial DNA Extraction kit.
2. Dissolve extracted DNA in water at 1-5 mg/mL.
3. Convert DNA sample to single-stranded DNA by incubating the sample at 95°C for 5 minutes and rapidly chilling on ice.
4. Digest DNA sample to nucleosides by incubating the denatured DNA with 5-20 units of nuclease P1 (previously reconstituted in the manufacturer's recommended buffer) for 2 hrs at 37°C in a final concentration of 20 mM Sodium Acetate, pH 5.2.
5. Add 5-10 units of alkaline phosphatase (previously reconstituted in the manufacturer's recommended buffer) plus sufficient Tris buffer to a final concentration of 100 mM Tris, pH 7.5, and incubate for 1 hr at 37°C.
6. Centrifuge the reaction mixture for 5 minutes at 6000 x g and collect the supernatant for use in the ELISA.

## **Assay Protocol**

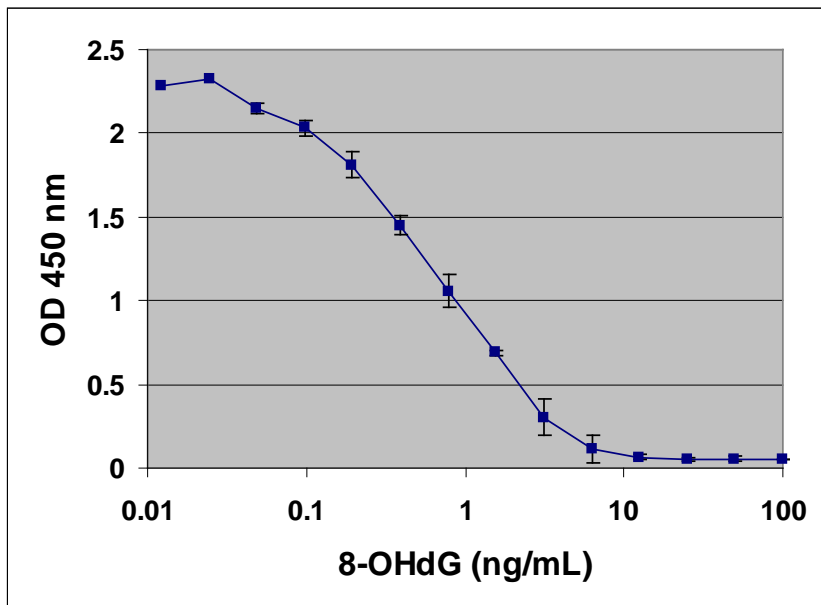
1. Prepare and mix all reagents thoroughly before use. Each 8-OHdG sample including unknown and standard should be assayed in duplicate. High content 8-OHdG urine or serum samples should be diluted at least 10-20 fold in Assay Diluent.
2. Add 50 µL of unknown sample or 8-OHdG standard to the wells of the 8-OHdG Conjugate coated plate. Incubate at room temperature for 10 minutes on an orbital shaker.
3. Add 50 µL of the diluted anti-8-OHdG antibody to each well, incubate at room temperature for 1 hour on an orbital shaker.
4. Wash microwell strips 3 times with 250 µL 1X Wash Buffer per well with thorough aspiration between each wash. After the last wash, empty wells and tap microwell strips on absorbent pad or paper towel to remove excess 1X Wash Buffer.
5. Add 100 µL of the diluted Secondary Antibody-Enzyme Conjugate to all wells.
6. Incubate at room temperature for 1 hour on an orbital shaker.
7. Wash microwell strips 3 times according to step 4 above. Proceed immediately to the next step.
8. Warm Substrate Solution to room temperature. Add 100 µL of Substrate Solution to each well, including the blank wells. Incubate at room temperature on an orbital shaker. Actual incubation time may vary from 2-30 minutes.

*Note: Watch plate carefully; if color changes rapidly, the reaction may need to be stopped sooner to prevent saturation.*

9. Stop the enzyme reaction by adding 100  $\mu\text{L}$  of Stop Solution into each well, including the blank wells. Results should be read immediately (color will fade over time).
10. Read absorbance of each microwell on a spectrophotometer using 450 nm as the primary wave length.

### **Example of Results**

The following figures demonstrate typical Oxidative DNA Damage ELISA results. One should use the data below for reference only. This data should not be used to interpret actual results.



**Figure 1: 8-OHdG ELISA Standard Curve.**

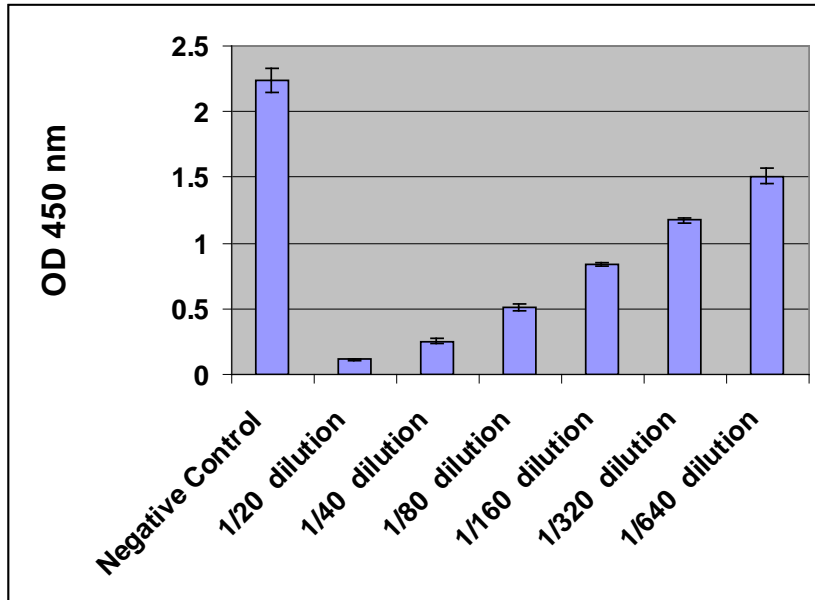


Figure 2: 8-OHdG level in human urine sample.

## References

1. Patel P. R, Bevan R. J, Mistry N and Lunec J. (2007) *J. Free Radic Biol Med.* **42**, 552-558.
2. Shen J, Deininger P, Hunt J. D, and Zhao H. (2007) *Cancer* **109**, 574-580.
3. Wu L. L, Chiou C. C, Chang P. Y and Wu J. T. (2004) *Clin Chim Acta.* **339**, 1-9.

## Recent Product Citations

1. Lee, A.R. et al. (2018). A Genome-wide Screening of Target Genes Against Silver Nanoparticles in Fission Yeast. *Toxicol Sci.* **161**(1):171-185. doi: 10.1093/toxsci/kfx208.
2. Anderson, S.M. et al. (2018). The Effect of Nitric Oxide Pollution on Oxidative Stress in Pregnant Women Living in Durban, South Africa. *Arch Environ Contam Toxicol.* **74**: 228.
3. Wu, X. et al. (2018). Antibiotic bedaquiline effectively targets growth, survival and tumor angiogenesis of lung cancer through suppressing energy metabolism. *Biochem Biophys Res Commun.* **495**(1):267-272. doi: 10.1016/j.bbrc.2017.10.136
4. Gmitterová, K. et al. (2018). DNA versus RNA oxidation in Parkinson's disease: Which is more important? *Neurosci Lett.* **662**:22-28. doi: 10.1016/j.neulet.2017.09.048.
5. Aydin, H. et al (2017). Hyperoxaluria Induces Oxidative DNA Damage and Results in Renal Tubular Epithelial Cell Apoptosis: A Clue to the Pathogenesis of Urolithiasis. *Exp Tech Urol Nephrol.* **1**(1).
6. Samatra, D. P. G. P. et al. (2017). Extract of Earthworms (*Lumbricus Rubellus*) Reduced Malondialdehyde and 8-hydroxy-deoxyguanosine Level in Male Wistar Rats Infected by *Salmonella typhi*. *Biomed Pharmacol J.* **10**(4).
7. Zhou, Y. et al (2017). Pterostilbene protects against traumatic spinal cord injury via inhibiting inflammation and oxidative stress. *Int J Clin Exp Med.* **10**(8):11804-11811.

8. Sharma, D. et al. (2017). Estrogen Receptor  $\beta$  Mediated Neuroprotective Efficacy of Cicer microphyllum Seed Extract in Global Hypoxia. *Neurochem Res.* **42**(12):3474-3489. doi: 10.1007/s11064-017-2395-5.
9. Bian, A. et al. (2017). Downregulation of autophagy is associated with severe ischemia-reperfusion-induced acute kidney injury in overexpressing C-reactive protein mice. *PLoS One.* **12**(9):e0181848. doi: 10.1371/journal.pone.0181848. eCollection 2017.
10. Kołodziej, U. et al. (2017). Chronic high-protein diet induces oxidative stress and alters the salivary gland function in rats. *Arch Oral Biol.* **84**:6-12. doi: 10.1016/j.archoralbio.2017.09.006.
11. Adhami, N. et al. (2017). Biomarkers of disease can be detected in mice as early as 4 weeks after initiation of exposure to third-hand smoke levels equivalent to those found in homes of smokers. *Clin Sci (Lond).* **131**(19):2409-2426. doi: 10.1042/CS20171053.
12. Wan, R. et al. (2017). Cobalt nanoparticles induce lung injury, DNA damage and mutations in mice. *Part Fibre Toxicol.* **14**: 38. doi: 10.1186/s12989-017-0219-z
13. Chatterjee, A. et al. (2017). Antioxidant activities of novel resveratrol analogs in breast cancer. *J Biochem Mol Toxicol.* doi: 10.1002/jbt.21925.
14. Jungner, Å. et al. (2017). Cardiopulmonary bypass in the newborn: effects of circulatory cell-free hemoglobin and hyperoxia evaluated in a novel rat pup model. *Intensive Care Med Exp.* **5**(1):45. doi: 10.1186/s40635-017-0153-2.
15. Jiang, S. et al. (2017). Antibiotic drug piperacillin induces neuron cell death through mitochondrial dysfunction and oxidative damage. *Can J Physiol Pharmacol.* doi: 10.1139/cjpp-2016-0679.
16. Zhu, M. Li, Y., and Zhou, Z. (2017). Antibiotic ivermectin preferentially targets renal cancer through inducing mitochondrial dysfunction and oxidative damage. *Biochem Biophys Res Commun.* **492**(3):373-378. doi: 10.1016/j.bbrc.2017.08.097.

Please see the complete list of product citations: <http://www.cellbiolabs.com/8-ohdg-dna-damage-elisa>.

## **Warranty**

These products are warranted to perform as described in their labeling and in Cell Biolabs literature when used in accordance with their instructions. THERE ARE NO WARRANTIES THAT EXTEND BEYOND THIS EXPRESSED WARRANTY AND CELL BIOLABS DISCLAIMS ANY IMPLIED WARRANTY OF MERCHANTABILITY OR WARRANTY OF FITNESS FOR PARTICULAR PURPOSE. CELL BIOLABS' sole obligation and purchaser's exclusive remedy for breach of this warranty shall be, at the option of CELL BIOLABS, to repair or replace the products. In no event shall CELL BIOLABS be liable for any proximate, incidental or consequential damages in connection with the products.

## **Contact Information**

Cell Biolabs, Inc.  
 7758 Arjons Drive  
 San Diego, CA 92126  
 Worldwide: +1 858-271-6500  
 USA Toll-Free: 1-888-CBL-0505  
 E-mail: [tech@cellbiolabs.com](mailto:tech@cellbiolabs.com)  
[www.cellbiolabs.com](http://www.cellbiolabs.com)

©2007-2018: Cell Biolabs, Inc. - All rights reserved. No part of these works may be reproduced in any form without permissions in writing.