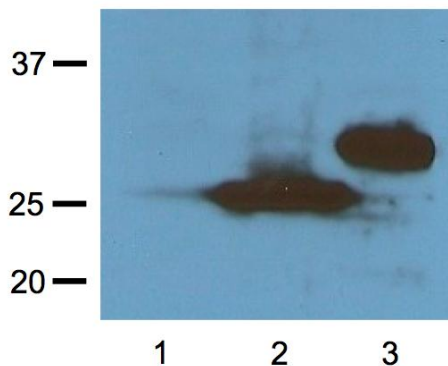


## Mouse Anti-RFP Monoclonal Antibody

<b>CATALOG NUMBER:</b>	AKR-021	<b>STORAGE:</b>	-20°C
<b>QUANTITY AND CONCENTRATION:</b>	100 µg of Protein A purified antibody at 1 mg/mL in 10 mM PBS, pH 7.2, containing 0.05% NaN <sub>3</sub>		
<b>SHELF LIFE:</b>	1 year from date of receipt under proper storage conditions; aliquot to avoid multiple freeze thaw cycles		
<b>HOST SPECIES:</b>	Mouse		
<b>ISOTYPE:</b>	IgG1		
<b>CLONE:</b>	RF5R		
<b>IMMUNOGEN:</b>	N-terminal RFP from <i>Discosoma</i> sea anemone conjugated to KLH		
<b>SPECIFICITY:</b>	Native and denatured RFP and its variants including Tag-RFP, Turbo-RFP, DsRed, mCherry and mOrange		
<b>SENSITIVITY:</b>	1-10 ng of purified RFP or RFP fusion proteins		
<b>APPLICATION:</b>	Immunoblot (1:1000 to 1:3000; incubate 1 hr at room temp) Immunostaining (1:500 to 1:2000) ELISA or Dot blot (user to determine working dilution)		

### Example of Results

The following figures demonstrate typical results. One should use the data below for reference only. This data should not be used to interpret actual results.



**Figure 1. Immunoblotting with Anti-RFP clone #RF5R.** Anti-RFP antibody at 1 µg/mL (1:1000 dilution). **Lane 1:** Untransfected control. **Lane 2:** HEK293 cells transfected with Turbo-RFP-tagged fusion protein. **Lane 3:** HEK293 cells transfected with DsRed-tagged fusion protein.

## **Recent Citations**

1. Altamura, E. et al. (2016). Chemical-induced read-through at premature termination codons determined by a rapid dual-fluorescence system based on *S. cerevisiae*. *PLoS One*. **11**:e0154260.
2. Maamary, J. et al. (2012). Attenuated influenza virus constructs with enhanced hemagglutinin protein expression. *J. Virol.* **86**: 5782-5790.

## **Warranty**

These products are warranted to perform as described in their labeling and in Cell Biolabs literature when used in accordance with their instructions. THERE ARE NO WARRANTIES THAT EXTEND BEYOND THIS EXPRESSED WARRANTY AND CELL BIOLABS DISCLAIMS ANY IMPLIED WARRANTY OF MERCHANTABILITY OR WARRANTY OF FITNESS FOR PARTICULAR PURPOSE. CELL BIOLABS's sole obligation and purchaser's exclusive remedy for breach of this warranty shall be, at the option of CELL BIOLABS, to repair or replace the products. In no event shall CELL BIOLABS be liable for any proximate, incidental or consequential damages in connection with the products.

*This product is for RESEARCH USE ONLY; not for use in diagnostic procedures.*

## **Contact Information**

Cell Biolabs, Inc.  
7758 Arjons Drive  
San Diego, CA 92126  
Worldwide: +1 858-271-6500  
USA Toll-Free: 1-888-CBL-0505  
E-mail: [tech@cellbiolabs.com](mailto:tech@cellbiolabs.com)  
[www.cellbiolabs.com](http://www.cellbiolabs.com)

©2012-2016: Cell Biolabs, Inc. - All rights reserved. No part of these works may be reproduced in any form without permissions in writing.