
Product Manual

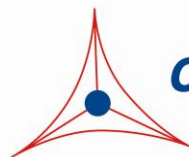
CytoSelect™ 96-Well Cell Invasion Assay (Basement Membrane, Fluorometric Format)

Catalog Number

CBA-112

96 assays

FOR RESEARCH USE ONLY
Not for use in diagnostic procedures



CELL BIOLABS, INC.
Creating Solutions for Life Science Research

Introduction

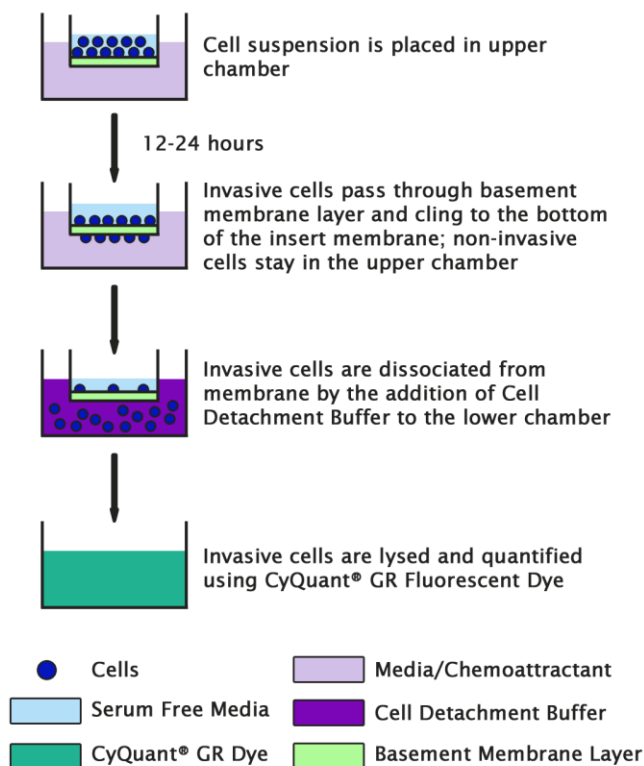
The ability of malignant tumor cells to invade normal surrounding tissue contributes in large part to the significant morbidity and mortality of cancers. Invasiveness requires several distinct cellular functions including adhesion, motility, detachment, and extracellular matrix proteolysis. Metastatic cells produce many proteolytic enzymes (e.g. lysosomal hydrolysates, collagenases, plasminogen activators) while the expression of certain cell surface protease receptors is also increased.

Cell Biolabs CytoSelect™ 96-well Cell Invasion Assay Kit utilizes basement membrane-coated inserts to assay the invasive properties of tumor cells. The kit does not require you to prelabel the cells with Calcein AM or remove non-invaded cells (i.e. cotton swabbing). Any invaded cells are first dissociated from the membrane, then lysed and detected with CyQuant® GR Dye.

Cell Biolabs CytoSelect™ 96-well Cell Invasion Assay Kit provides a robust system for the quantitative determination of cell invasion. The kit contains sufficient reagents for the evaluation of 96 samples.

Assay Principle

The CytoSelect™ 96-well Cell Invasion Assay Kit contains polycarbonate membrane inserts (8 µm pore size) in a 96-well plate. The upper surface of the insert membrane is coated with a uniform layer of dried basement membrane matrix solution. This basement membrane layer serves as a barrier to discriminate invasive cells from non-invasive cells. Invasive cells are able to degrade the matrix proteins in the layer, and ultimately pass through the pores of the polycarbonate membrane. Finally, the invaded cells are dissociated from the membrane and subsequently detected with CyQuant® GR Dye (Invitrogen).



Related Products

1. CBA-101-C: CytoSelect™ 24- Well Cell Migration and Invasion Assay (8μm, Fluorometric)
2. CBA-106-C: CytoSelect™ 96-Well Cell Migration and Invasion Assay (8μm, Fluorometric)
3. CBA-111: CytoSelect™ 24-Well Cell Invasion Assay (Basement Membrane, Fluorometric)
4. CBA-111-COL: CytoSelect™ 24-Well Cell Invasion Assay (Collagen I, Fluorometric)
5. CBA-112-COL: CytoSelect™ 96-Well Cell Invasion Assay (Collagen I, Fluorometric)

Kit Components (shipped at room temperature)

1. 96-well ECM Invasion Plate (Part No. 11201): One sterile 96-well plate containing ECM-coated inserts (see Figure 1 for components)
2. 96-well Cell Harvesting Tray (Part No. 10402): One 96-well tray
3. Cell Detachment Solution (Part No. 10403): One 20 mL bottle
4. 4X Lysis Buffer (Part No. 10404): One 10 mL bottle
5. CyQuant® GR Dye (Part No. 10105): One 75 μL tube

Materials Not Supplied

1. Invasive cell lines
2. Cell culture medium
3. Serum free medium, such as DMEM containing 0.5% BSA, 2 mM CaCl₂ and 2 mM MgCl₂
4. Cell culture incubator (37°C, 5% CO₂ atmosphere)
5. Light microscope
6. 96-well microtiter plate
7. Microtiter plate reader

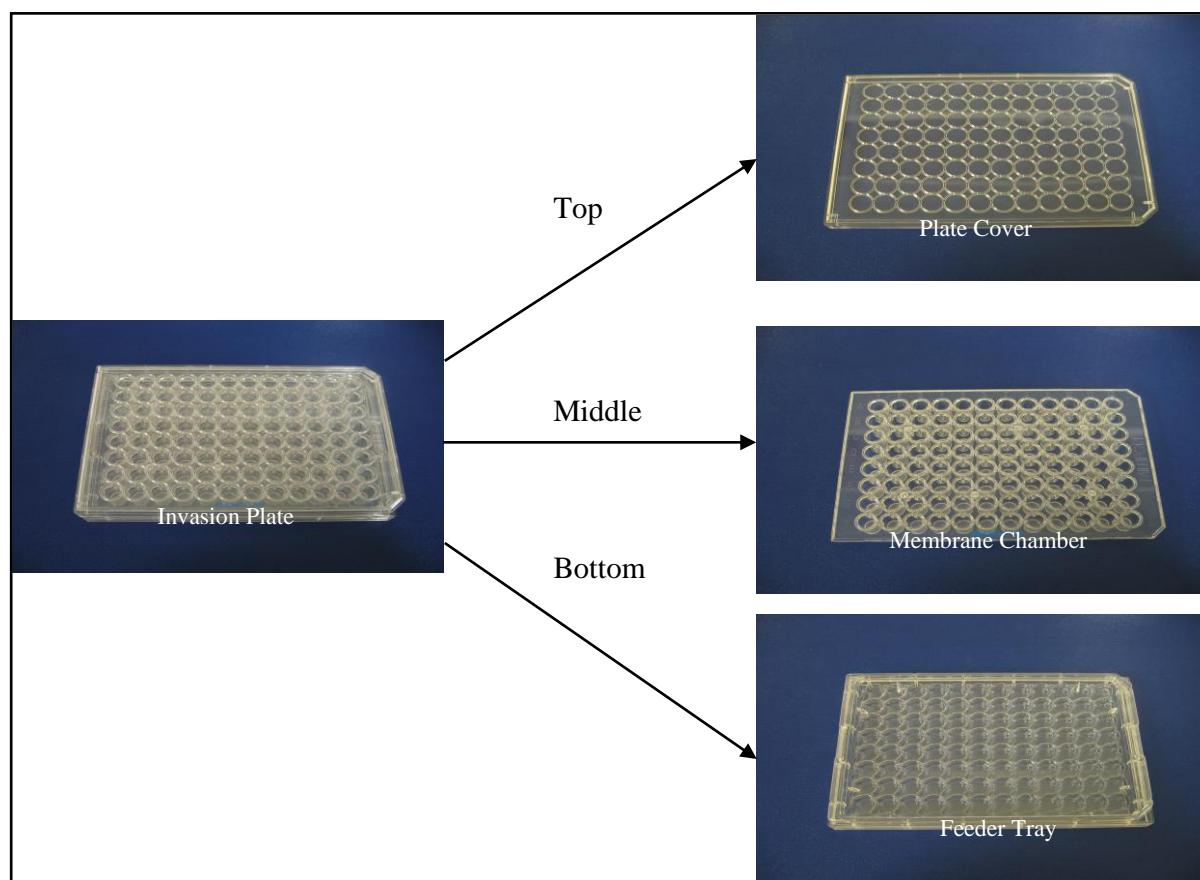


Figure 1: Components of the 96-well ECM Invasion Plate.

Storage

Store all components at 4°C.

Assay Protocol

1. Under sterile conditions, allow the invasion plate to warm up at room temperature for 10 minutes.
2. Rehydrate the basement membrane layer of the membrane inserts by adding 100 μ L of warm, serum-free media to the inner compartment. Incubate at room temperature for 1 hour.
3. Prepare a cell suspension containing $0.2\text{--}2.0 \times 10^6$ cells/ml in serum free media. Agents that inhibit or stimulate cell invasion can be added directly to the cell suspension.
4. Carefully remove the rehydration medium (step 2) from the inserts without disturbing the basement membrane layer.

Note: It will not affect the assay performance if a small amount of rehydration medium is left in the compartment

5. Under sterile conditions, separate the cover and membrane chamber from the feeder tray. Add 150 μ L of media containing 10% fetal bovine serum or desired chemoattractant(s) to the wells of the feeder tray.
6. Place the membrane chamber back into the feeder tray (containing chemoattractant solution). **Ensure no bubbles are trapped under the membrane.**

7. Gently mix the cell suspension from step 3 and add 100 μL to the membrane chamber.
8. Finally, cover the plate and transfer to a cell culture incubator for 12-24 hours.
9. Just prior to the end of the incubation, pipette 150 μL of prewarmed Cell Detachment Solution into wells of the clean, 96-Well Cell Harvesting Tray (provided).
10. Carefully remove the 96-well Invasion Plate from the incubator. Separate the membrane chamber from the feeder tray.
11. Remove the cells/media from the top side of the membrane chamber by aspirating or inverting. Place the membrane chamber into the Cell Harvesting Tray containing 150 μL of Cell Detachment Solution (step 9). Incubate 30 minutes at 37°C.
12. Completely dislodge the cells from the underside of the membrane by gently tilting the membrane chamber several times in the Cell Detachment Solution.
13. Prepare sufficient 4X Lysis Buffer/CyQuant® GR dye solution for all samples by diluting the dye 1:75 in 4X Lysis Buffer (for example, add 5 μL dye to 370 μL of 4X Lysis Buffer).
14. Add 50 μL of 4X Lysis Buffer/CyQuant® GR dye solution to each well (already containing 150 μL of Cell Detachment Solution). Incubate 20 minutes at room temperature.
15. Transfer 150 μL of the mixture to a 96-well plate suitable for fluorescence measurement. Read the fluorescence with a fluorescence plate reader at 480 nm/520 nm.

Example of Results

The following figures demonstrate typical with the CytoSelect™ Cell Invasion Assay Kit. One should use the data below for reference only. This data should not be used to interpret actual results.

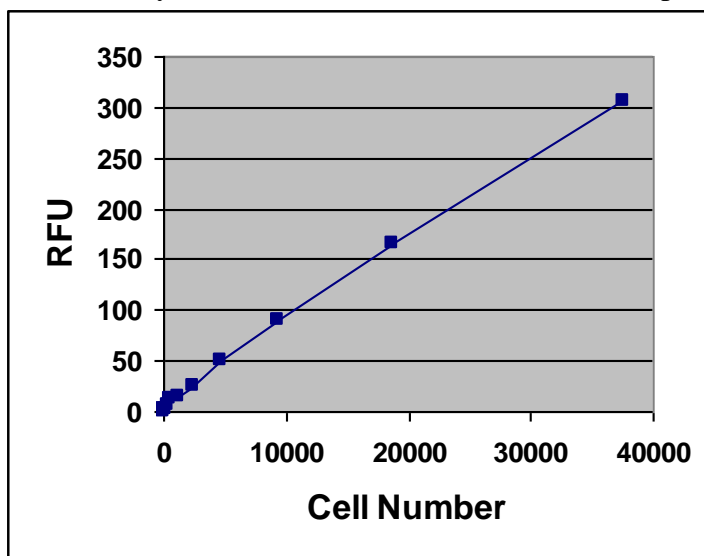


Figure 2: Quantitation of Human HT-1080. HT-1080 cells were titrated in Cell Detachment Buffer, then subsequently lysed and detected with 4X Lysis Buffer/Cyquant® GR Dye (150 μL cell suspension was mixed with 50 μL of 4X Lysis Buffer/dye).

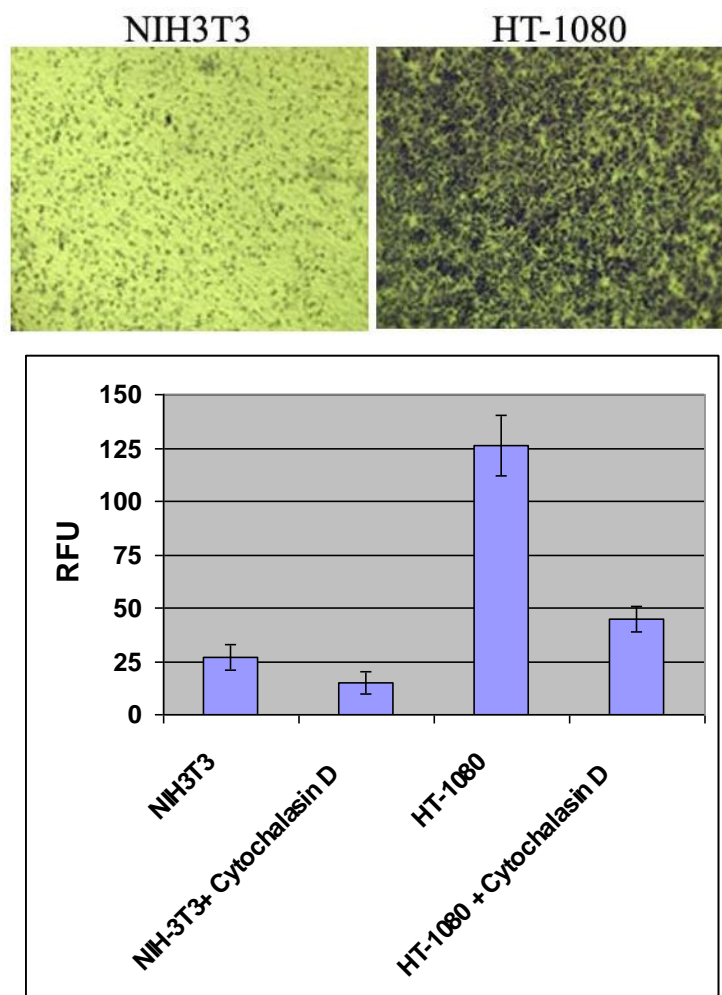


Figure 3: HT-1080 Invasion Assay. HT-1080 or NIH3T3 cells were allowed to invade toward 10% FBS for 24 hrs in the presence or absence of 2 μ M Cytochalasin D, 200,000 cells were used in each assay. Invaded cells on the bottom of the polycarbonate membrane were stained (top) and quantified by CyQuant® GR Dye as described in Assay Protocol.

References

1. Erkell, L. J., Schirmacher, V. (1988) *Cancer Res* **48**, 6933-6937.
2. Montgomery, A. M. P., De Clerck, Y. A., Langley, K. E., Reisfeld, R. A., Mueller, B. M. (1993) *Cancer Res* **53**,693-700.
3. Monsky, W. L., Lin, C. Y., Aoyama, A., Kelly, T., Akiyama, S. K., Mueller, S. C., Chen, W. T. (1994) *Cancer Res* **54**,5702-5710.

Recent Product Citations

1. Basu, R. et al. (2023). Structure and function of a dual antagonist of the human growth hormone and prolactin receptors with site-specific PEG conjugates. *J Biol Chem.* **299**(8):105030. doi: 10.1016/j.jbc.2023.105030.
2. Han, D.H. et al. (2023). Chronic Exposure to TDI Induces Cell Migration and Invasion via TGF- β 1 Signal Transduction. *Int J Mol Sci.* **24**(7):6157. doi: 10.3390/ijms24076157.

3. Arikoglu, H. et al. (2022). The effects of Juglone-Selenium combination on invasion and metastasis in pancreatic cancer cell lines. *Afri Health Sci.* **22**(2): 334-342. doi: 10.4314/ahs.v22i2.37.
4. Nagase, Y. et al. (2022). Anti-lipolysis-stimulated lipoprotein receptor monoclonal antibody as a novel therapeutic agent for endometrial cancer. *BMC Cancer.* **22**(1):679. doi: 10.1186/s12885-022-09789-6.
5. Nii, T. & Tabata, Y. et al. (2021). Immunosuppressive mesenchymal stem cells aggregates incorporating hydrogel microspheres promote an in vitro invasion of cancer cells. *Regen Ther.* doi: 10.1016/j.reth.2021.11.006.
6. Ikeda, J. et al. (2021). COMMD5 Inhibits Malignant Behavior of Renal Cancer Cells. *Anticancer Res.* **41**(6):2805-2815. doi: 10.21873/anticancer.15061.
7. Nii, T. et al. (2020). A co-culture model of 3D TAM and 3D CAF combined with biomolecules release for cancer cell migration. *Tissue Eng Part A.* doi: 10.1089/ten.TEA.2020.0095.
8. Nii, T. et al. (2020). A cancer invasion model of cancer-associated fibroblasts aggregates combined with TGF- β 1 release system. *Regen Ther.* **14**:196-204. doi: 10.1016/j.reth.2020.02.003.
9. Tanaka, E. et al. (2019). Expression of circular RNA CDR1-AS in colon cancer cells increases cell surface PD-L1 protein levels. *Oncol Rep.* doi: 10.3892/or.2019.7244.
10. Pereira, M.C. et al. (2019). In Vitro Analysis of the Combinatory Effects of Novel Aminonaphthoquinone Derivatives and Curcumin on Breast Cancer Progression. *Anticancer Res.* **40**(1):229-238. doi: 10.21873/anticancer.13944.
11. Kowolik, C.M. et al. (2019). Attenuation of hedgehog/GLI signaling by NT1721 extends survival in pancreatic cancer. *J Exp Clin Cancer Res.* **38**(1):431. doi: 10.1186/s13046-019-1445-z.
12. Tanaka, Y. et al. (2019). Differential Prognostic Relevance of Promoter DNA Methylation of CDO1 and HOPX in Primary Breast Cancer. *Anticancer Res.* **39**(5):2289-2298. doi: 10.21873/anticancer.13345.
13. Ishii, S. et al. (2017). The H19-PEG10/IGF2BP3 axis promotes gastric cancer progression in patients with high lymph node ratios. *Oncotarget.* **8**(43):74567-74581. doi: 10.18632/oncotarget.20209.
14. Chueca, E. et al. (2016). Proton pump inhibitors display antitumor effects in Barrett's Adenocarcinoma cells. *Front. Pharmacol.* **7**:452.
15. Zhou, Z.L. et al. (2016). Nanomechanical measurement of adhesion and migration of leukemia cells with phorbol 12-myristate 13-acetate treatment. *Int. J. Nanomedicine* **11**:6533-6545.
16. Smith, R.W. et al. (2016). Therapeutic potential of GW501516 and the role of Peroxisome proliferator-activated receptor β/δ and B-cell lymphoma 6 in inflammatory signaling in human pancreatic cancer cells. *Biochem. Biophys.* **8**:395-402.
17. Saha, S. K. et al. (2016). KRT19 directly interacts with β -catenin/RAC1 complex to regulate NUMB-dependent NOTCH signaling pathway and breast cancer properties. *Oncogene.* doi:10.1038/onc.2016.221.
18. Hirahata, M. et al. (2016). PAI-1, a target gene of miR-143, regulates invasion and metastasis by upregulating MMP-13 expression of human osteosarcoma. *Cancer Med.* doi:10.1002/cam4.651.
19. Knappe, N. et al. (2016). Directed de-differentiation using partial reprogramming induces invasive phenotype in melanoma cells. *Stem Cells.* doi:10.1002/stem.2284.
20. Adam, M. G. et al. (2015). SIAH ubiquitin ligases regulate breast cancer cell migration and invasion independent of the oxygen status. *Cell Cycle.* **14**:3734-3747.
21. Leung, W.H. et al. (2013). Modulation of NKG2D ligand expression and metastasis in tumors by spironolactone via RXR $\{\gamma\}$ activation. *J. Exp. Med.* **210**:2675-2692.

22. Nakayama, K. et al. (2013). cAMP-response element-binding Protein (CREB) and NF- κ B transcription factors are activated during prolonged hypoxia and cooperatively regulate the induction of matrix metalloproteinase MMP1. *J. Biol. Chem.* **288**:22584-22595.
23. Yamamoto, K. et al. (2014). miR-379/411 cluster regulates IL-18 and contributes to drug resistance in malignant pleural mesothelioma. *Oncol Rep.* **32**:2365-2372.
24. Takeuchi, S. et al. (2014). Significance of osteopontin in the sensitivity of malignant pleural mesothelioma to pemetrexed. *Int J Oncol.* **44**:1886-1894.
25. Ichijo, S. et al. (2014). Activation of the RhoB signaling pathway by thyroid hormone receptor β in thyroid cancer cells. *PLoS One.* **9**:e116252.
26. Ruan, M. et al. (2014). Activation of Toll-like receptor-9 promotes cellular migration via up-regulating MMP-2 expression in oral squamous cell carcinoma. *PLoS One.* **9**:e92748.
27. Ismail, I. A. et al. (2014). DJ-1 upregulates breast cancer cell invasion by repressing KLF17 expression. *Br J Cancer.* **110**:1298-1306.
28. Chen, Z. et al. (2012). The iron chelators Dp44mT and DFO inhibit TGF- β -induced epithelial-mesenchymal transition via up-regulation of N-Myc downstream-regulated gene 1 (NDRG1). *J. Biol. Chem.* **287**:17016-17028.
29. Beach, J.R. et al. (2011). Myosin II isoform switching mediates invasiveness after TGF- β -induced epithelial-mesenchymal transition. *PNAS* **108**:17991-17996.
30. Eckstein, N. et al. (2009). Hyperactivation of the insulin-like growth factor receptor I signaling pathway is an essential event for cisplatin resistance of ovarian cancer cells. *Cancer Res.* **69**:2996-3003.

License Information

This product is provided under an intellectual property license from Life Technologies Corporation. The purchase of this product conveys to the buyer the non-transferable right to use the purchased product and components of the product only in research conducted by the buyer (whether the buyer is an academic or for-profit entity). The sale of this product is expressly conditioned on the buyer not using the product or its components, or any materials made using the product or its components, in any activity to generate revenue, which may include, but is not limited to use of the product or its components: (i) in manufacturing; (ii) to provide a service, information, or data in return for payment; (iii) for therapeutic, diagnostic or prophylactic purposes; or (iv) for resale, regardless of whether they are resold for use in research. For information on purchasing a license to this product for purposes other than as described above, contact Life Technologies Corporation, 5791 Van Allen Way, Carlsbad CA 92008 USA or outlicensing@lifetech.com.

Warranty

These products are warranted to perform as described in their labeling and in Cell Biolabs literature when used in accordance with their instructions. THERE ARE NO WARRANTIES THAT EXTEND BEYOND THIS EXPRESSED WARRANTY AND CELL BIOLABS DISCLAIMS ANY IMPLIED WARRANTY OF MERCHANTABILITY OR WARRANTY OF FITNESS FOR PARTICULAR PURPOSE. CELL BIOLABS' sole obligation and purchaser's exclusive remedy for breach of this warranty shall be, at the option of CELL BIOLABS, to repair or replace the products. In no event shall CELL BIOLABS be liable for any proximate, incidental or consequential damages in connection with the products.

Contact Information

Cell Biolabs, Inc.
5628 Copley Drive
San Diego, CA 92111
Worldwide: +1 858-271-6500
USA Toll-Free: 1-888-CBL-0505
E-mail: tech@cellbiolabs.com
www.cellbiolabs.com

©2004-2024: Cell Biolabs, Inc. - All rights reserved. No part of these works may be reproduced in any form without permissions in writing.