

Platinum- E Retroviral Packaging Cell Line, Ecotropic

CATALOG NUMBER: RV-101

STORAGE: Liquid nitrogen

Note: For best results begin culture of cells immediately upon receipt. If this is not possible, store at -80°C until first culture. Store subsequent cultured cells long term in liquid nitrogen.

QUANTITY & CONCENTRATION: 1.0 mL, $>3 \times 10^6$ cells/mL in DMEM, 20% FCS, and 10% DMSO

Background

Retroviruses are efficient tools for delivering heritable genes into the genome of dividing cells. However, conventional NIH-3T3 based retroviral packaging cell lines have limited stability and produce low viral yields, mainly due to poor expression level of the retroviral structure proteins (gag, pol, env) in the packaging cells.

The Platinum-E (Plat-E) Cell Line, a potent retrovirus packaging cell line based on the 293T cell line, was generated using novel packaging constructs with an EF1 α promoter to ensure longer stability and high-yield retroviral structure protein expression (gag, pol, ecotropic env). Plat-E cells can be kept in good condition in for at least 4 months in the presence of drug selection, and can produce retroviruses with an average titer of 1×10^7 infectious units/mL by transient transfection. In addition, replication competent retroviruses (RCR) are virtually nonexistent because only coding sequences of viral structural genes are used, avoiding any unnecessary retroviral sequences.

The Plat-E cell line is designed for rapid, transient production of high-titer ecotropic retrovirus.

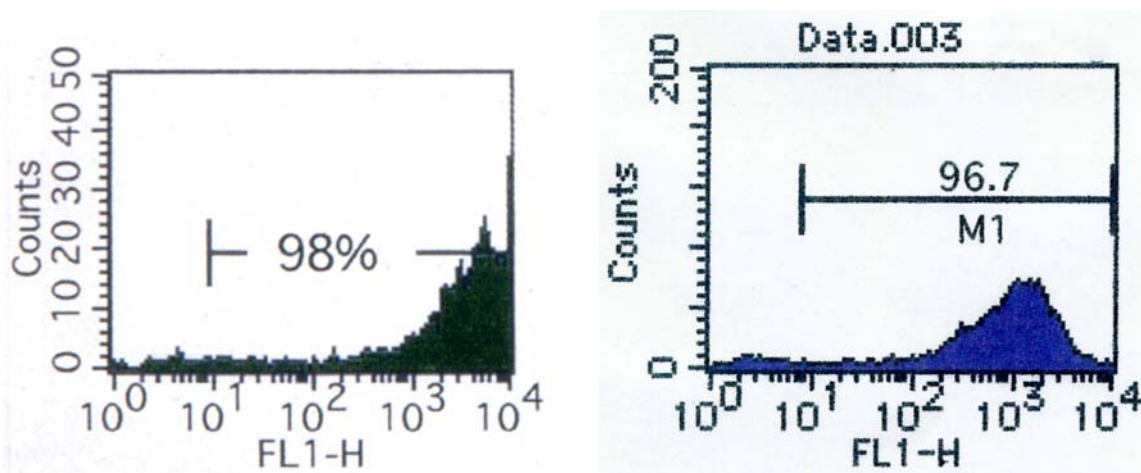


Figure 1. NIH3T3 cells (left) and mouse ProB Ba/F3 cells (right) were infected with GFP retrovirus supernatant produced in Plat-E cells after transfection with pMX-GFP.

Medium

1. Culture Medium: DMEM, 10% fetal calf serum (FCS), 1 $\mu\text{g}/\text{mL}$ puromycin, 10 $\mu\text{g}/\text{mL}$ blasticidin, penicillin and streptomycin
2. Freeze Medium: 70% DMEM, 20% FBS, 10% DMSO

Methods

I. Establishing Plat-E Cultures from Frozen Cells

1. After quickly thawing the cells in a 37°C water bath, immediately transfer the thawed cell suspension into a 15 mL tube containing 10 mL of culture medium.
2. Centrifuge the tube for 5 min at 1300 to 1500 rpm.
3. Discard the supernatant and break the cell pellet by finger tapping.
4. Add a few drops of culture medium with gentle shaking and finger tap the tube a few times.
5. Add 2 mL of culture medium to the tube and gently pipet the cell suspension up and down twice.
6. Transfer the cell suspension to a 10 cm culture dish (Falcon® #3003 works well) containing 8 mL of culture medium.
7. Swirl the culture plate well to mix the cells, then incubate the cells for three days before expansion.

Important Notes:

- ***Don't change the culture medium during the first three days. It is normal to see some cells floating after the first 24 hours.***
- ***Don't culture cells to complete confluency. Split cells 4X to 6X every two to three days when the culture reaches 70-90% confluency.***

II. Splitting the Cells

Note: Avoid forming bubbles as much as possible during this procedure.

1. Wash cells once with PBS.
2. Add 4 mL of 0.05% Trypsin/0.5 mM EDTA solution to a 10 cm dish and incubate at 37°C for 3-5 min.
3. Remove the cells from the dish surface by tapping the rim of the culture dish.
4. Transfer 10 mL of the culture medium to a 50 mL tube.
5. Using the same pipette with some residual culture medium, wash the dish surface gently three times in 4 mL of the Trypsin/EDTA solution.
6. Gently pipette the cell suspension up and down 7 times and transfer the cell suspension into the 50 mL tube containing 10 mL medium from step 4.
7. Centrifuge the cells for 5 min at 1300-1500 rpm.
8. Discard the supernatant and break the cell pellet by finger tapping.
9. Add a few drops of culture medium with gentle shaking and finger tap the tube a few times.
10. Add 5 mL of culture medium and gently pipet the cell suspension up and down twice.
11. Add 15 mL of culture medium, then count and seed the cells. Typically 10^7 cells can be harvested from one 10 cm culture dish.

Transfection

1. Seed 2×10^6 cells in a 60 mm culture dish without antibiotics including puromycin and blasticidin one day before transfection.

2. After 16 to 24 hours, start transfection when the culture becomes 70-80% confluent.
Note: We suggest transfecting cells with FuGENE® Transfection Reagent (Promega) or Lipofectamine™ Plus (Invitrogen). For example, 3 µg retroviral expression plasmid is mixed with 9 µL FuGENE® Transfection Reagent according to the manufacturer's recommendation. The mixed DNA- FuGENE® complex is added by dropwise into the culture media.
3. Harvest retroviral supernatant 48 hours after transfection.

References

1. Morita, S., Kojim, T., and Kitamura, T. (2000) *Gene Therapy* **7**: 1063-1066.
2. Takahashi, K. and Yamanaka, S. (2006) *Cell* **126**: 663-676.

Recent Product Citations

1. Artlett, C.M. et al. (2017). Mir-155 is overexpressed in systemic sclerosis fibroblasts and is required for NLRP3 inflammasome-mediated collagen synthesis during fibrosis. *Arthritis Res. Ther.* **19**(1):144.
2. Mustachio, L.M. et al. (2017). Deubiquitinase USP18 Loss Mislocalizes and Destabilizes KRAS in Lung Cancer. *Mol Cancer Res.* doi: 10.1158/1541-7786.MCR-16-0369.
3. Hashimoto-Tane, A. et al. (2017). Analyzing the Dynamics of Signaling Microclusters. *Methods Mol Biol.* **1584**:51-64. doi: 10.1007/978-1-4939-6881-7_4.
4. Mühlhäuser, W.W. et al. (2017). Light-Regulated Protein Kinases Based on the CRY2-CIB1 System. *Methods Mol Biol.* **1596**:257-270. doi: 10.1007/978-1-4939-6940-1_16.
5. Stelzl, T. et al. (2017). Glycans in the intestinal peptide transporter PEPT1 contribute to function and protect from proteolysis. *Am J Physiol Gastrointest Liver Physiol.* ajpgi.00343.2016. doi: 10.1152/ajpgi.00343.2016.
6. Bharathan, S.P. (2017). Systematic evaluation of markers used for the identification of human induced pluripotent stem cells. *Biol Open.* **6**(1):100-108. doi: 10.1242/bio.022111.
7. Cirovic, B. et al. (2017). C/EBP-Induced Transdifferentiation Reveals Granulocyte-Macrophage Precursor-like Plasticity of B Cells. *Stem Cell Reports.* **8**(2):346-359. doi: 10.1016/j.stemcr.2016.12.015.
8. Kawada, M. et al. (2017). A novel monoclonal antibody targeting coxsackie virus and adenovirus receptor inhibits tumor growth in vivo. *Sci Rep.* **7**:40400. doi: 10.1038/srep40400.
9. Li, Q. et al. (2017). HLA-DQ β1 alleles associated with Epstein-Barr virus (EBV) infectivity and EBV gp42 binding to cells. *JCI Insight.* **2**(4):e85687. doi: 10.1172/jci.insight.85687.
10. Lin, Y. et al. (2017). SUMO-modified Insulin-Like Growth Factor 1 Receptor (IGF-1R) Increases Cell Cycle Progression and Cell Proliferation. *J Cell Physiol.* doi: 10.1002/jcp.25818.
11. Takizawa F, et al. (2016). Novel Teleost CD4-Bearing Cell Populations Provide Insights into the Evolutionary Origins and Primordial Roles of CD4+ Lymphocytes and CD4+ Macrophages. *J Immunol.* **196**(11):4522-35. doi: 10.4049/jimmunol.1600222.
12. Yamashita, S. et al. (2016). Mitochondrial division occurs concurrently with autophagosome formation but independently of Dro1 during mitophagy. *J. Cell Biol.* **215**:649-665.
13. Baek, J.M. et al. (2016). Nicotinamide phosphoribosyltransferase inhibits receptor activator of nuclear factor-κB ligand-induced osteoclast differentiation in vitro. *Mol. Med. Rep.* doi:10.3892/mmr.2016.6069.
14. Izawa, T. et al. (2016). The nuclear receptor AhR controls bone homeostasis by regulating osteoclast differentiation via the RANK/c-Fos signaling axis. *J. Immunol.* **197**:4639-4650.

15. Dela Cruz, F.S. et al. (2016). A case study of an integrative genomic and experimental therapeutic approach for rare tumors: identification of vulnerabilities in a pediatric poorly differentiated carcinoma. *Genome Med.* **8**:116.
16. Izawa, T. et al. (2016). The nuclear receptor AhR controls bone homeostasis by regulating osteoclast differentiation via the RANK/c-Fos signaling axis. *J. Immunol.* doi:10.4049/jimmunol.1600822.
17. Dumas, M. E. et al. (2016). Topological analysis of metabolic networks integrating co-segregating transcriptomes and metabolomes in type 2 diabetic rat congenic series. *Genome Med.* doi:10.1186/s13073-016-0352-6.
18. Moriyama, T. et al. (2016). Two isoforms of TALDO1 generated by alternative translational initiation show differential nucleocytoplasmic distribution to regulate the global metabolic network. *Sci Rep.* doi:10.1038/srep34648.
19. Kimura, T. et al. (2016). Polarization of M2 macrophages requires Lamtor1 that integrates cytokine and amino acid signals. *Nature Comm.* doi:10.1038/ncomms13130.
20. Mitani, Y. et al. (2016). In vivo myomaker-mediated heterologous fusion and nuclear reprogramming. *FASEB J.* doi:10.1096/fj.201600945R.
21. Maine, C.J. et al. (2016). PTPN22 contributes to exhaustion of T lymphocytes during chronic viral infection. *PNAS* **113**:E7231-E7239.
22. Lacroix, M. et al. (2016). E4F1 controls a transcriptional program essential for pyruvate dehydrogenase activity. *Proc Natl Acad Sci U S A.* **113**:10998-1003.
23. Ishikura, S. et al. (2016). Molecular mechanisms of transcriptional regulation by the nuclear zinc-finger protein Zfat in T cells. *Biochim Biophys Acta.* doi:10.1016/j.bbagr.2016.08.010.
24. Erkhembaatar, M. et al. (2016). Lysosomal Ca²⁺ signaling is essential for osteoclastogenesis and bone remodeling. *J Bone Miner Res.* doi:10.1002/jbmr.2986.
25. Jin, Y. et al. (2016). Targeting methyltransferase PRMT5 eliminates leukemia stem cells in chronic myelogenous leukemia. *J Clin Invest.* doi:10.1172/JCI85239.
26. San, I. V. et al. (2016). High Podocalyxin levels promote cell viability partially through up-regulation of Annexin A2. *Biochem Biophys Res Commun.* doi:10.1016/j.bbrc.2016.07.102.
27. Talantikite, M. et al. (2016). The first intracellular loop of GLUT4 contains a retention motif. *J Cell Sci.* **129**:2273-2284.
28. Zhao, C. et al. (2016). Mice lacking the intracellular cation channel TRIC-B have compromised collagen production and impaired bone mineralization. *Sci. Signal.* doi:10.1126/scisignal.aad9055.
29. Mackay, L. K. et al. (2016). Hobit and Blimp1 instruct a universal transcriptional program of tissue residency in lymphocytes. *Science.* **352**:459-463.
30. Hu, R. et al. (2016). Detection of podocyte proliferation in rat nephropathy models by retrovirus-EGFP tracing technology. *Int J Clin Exp Pathol.* **9**:3340-3348.

Please see the complete list of product citations: <http://www.cellbiolabs.com/platinum-e-plat-e-retroviral-packaging-cell-line-0>.

Warranty

These products are warranted to perform as described in their labeling and in Cell Biolabs literature when used in accordance with their instructions. THERE ARE NO WARRANTIES THAT EXTEND BEYOND THIS EXPRESSED WARRANTY AND CELL BIOLABS DISCLAIMS ANY IMPLIED WARRANTY OF MERCHANTABILITY OR WARRANTY OF FITNESS FOR PARTICULAR PURPOSE. CELL BIOLABS's sole obligation and purchaser's exclusive remedy for breach of

this warranty shall be, at the option of CELL BIOLABS, to repair or replace the products. In no event shall CELL BIOLABS be liable for any proximate, incidental or consequential damages in connection with the products.

License Information

This licensed product is intended for ACADEMIC, GOVERNMENT AND NON-PROFIT RESEARCH USE ONLY; not for use in diagnostic or therapeutic procedures. The product may not be transferred, sold, or otherwise provided to another laboratory except by an authorized distributor of Cell Biolabs, Inc.

Use of this product by Biotechnology and Pharmaceutical companies requires a license for all fields of use including research. Please contact:

Director of Business Development
Cell Biolabs, Inc.
busdev@cellbiolabs.com

Contact Information

Cell Biolabs, Inc.
7758 Arjons Drive
San Diego, CA 92126
Worldwide: +1 858-271-6500
USA Toll-Free: 1-888-CBL-0505
E-mail: tech@cellbiolabs.com
www.cellbiolabs.com

©2008-2017: Cell Biolabs, Inc. - All rights reserved. No part of these works may be reproduced in any form without permissions in writing.