
Product Manual

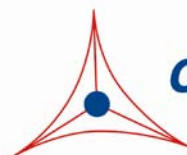
OxiSelect™ BPDE Protein Adduct ELISA Kit

Catalog Number

STA-301

96 assays

FOR RESEARCH USE ONLY
Not for use in diagnostic procedures



CELL BIOLABS, INC.
Creating Solutions for Life Science Research

Introduction

Polycyclic aromatic hydrocarbons (PAHs) are potent, ubiquitous atmospheric pollutants commonly associated with oil, coal, cigarette smoke, and automobile exhaust fumes. Some PAH compounds are also found in cooked foods (e.g. grilled meat, smoked fish) and have been identified as mutagenic and carcinogenic. The toxicity of some PAHs has been demonstrated to induce malignant tumors in animal models and is also commonly believed to significantly contribute to human cancers.

One PAH compound, benzo(a)pyrene, is notable for being the first chemical carcinogen to be discovered. Benzo(a)pyrene is a five-ring PAH known to be a procarcinogen; its mechanism of carcinogenesis is dependent on a 3-step enzymatic metabolism (Fig. 1 below) to the final mutagen benzo(a)pyrene diol epoxide (BPDE). Very reactive, BPDE binds covalently to proteins, lipids, and DNA (guanine residues) to produce BPDE adducts. If left unrepaired, DNA adducts may lead to permanent mutations resulting in cell transformation and ultimately tumor development.

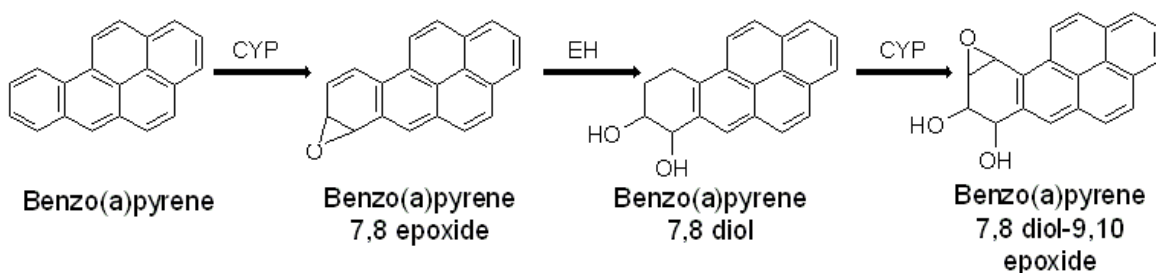


Figure 1: Benzo(a)pyrene catalyzed to various metabolites by Cytochrome P450 enzymes (CYP) and epoxide hydrolase (EH), resulting in the final carcinogen BPDE.

The OxiSelect™ BPDE Protein Adduct ELISA Kit is an enzyme immunoassay developed for rapid detection of BPDE-protein adducts. The quantity of BPDE adduct in protein samples is determined by relative comparison of a known BPDE-BSA standard curve. Each kit provides sufficient reagents to perform up to 96 assays, including standard curve and unknown protein samples.

Assay Principle

BSA standards or protein samples (10 µg/mL) are adsorbed onto a 96-well plate for 2 hrs at 37°C. The BPDE-protein adducts present in the sample or standard are probed with an Anti-BPDE-I Antibody, followed by an HRP Conjugated Secondary Antibody. The BPDE protein adduct content in an unknown sample is determined by comparing with a standard curve that is prepared from predetermined BPDE-BSA standards.

Related Products

1. STA-305: OxiSelect™ Nitrotyrosine ELISA Kit
2. STA-310: OxiSelect™ Protein Carbonyl ELISA Kit
3. STA-816: OxiSelect™ CML Competitive ELISA Kit
4. STA-817: OxiSelect™ Advanced Glycation End Products (AGE) Competitive ELISA Kit

5. STA-832: OxiSelect™ MDA Adduct Competitive ELISA Kit
6. STA-838: OxiSelect™ HNE Adduct Competitive ELISA Kit

Kit Components

Box 1 (shipped at room temperature)

1. 96-well Protein Binding Plate (Part No. 231001): One strip well 96-well plate.
2. Anti-BPDE Antibody (1000X) (Part No. 230101): One 20 µL vial of anti-BDPE-I antibody.
3. Secondary Antibody, HRP Conjugate (1000X) (Part No. 230003): One 20 µL vial.
4. Assay Diluent (Part No. 310804): One 50 mL bottle.
5. 10X Wash Buffer (Part No. 310806): One 100 mL bottle.
6. Substrate Solution (Part No. 310807): One 12 mL amber bottle.
7. Stop Solution (Part. No. 310808): One 12 mL bottle.
8. Reduced BSA Standard (Part No. 233202): One 500 µL vial of 1 mg/mL reduced BSA in PBS.

Box 2 (shipped on blue ice packs)

1. BPDE-BSA Standard (Part No. 230102): One 20 µL vial of 1 mg/mL BPDE-BSA in 1X PBS.

Materials Not Supplied

1. Protein samples such as purified protein, plasma, serum, cell lysate
2. 1X PBS
3. 10 µL to 1000 µL adjustable single channel micropipettes with disposable tips
4. 50 µL to 300 µL adjustable multichannel micropipette with disposable tips
5. Multichannel micropipette reservoir
6. Microplate reader capable of reading at 450 nm (620 nm as optional reference wave length)

Storage

Upon receipt, aliquot and store the Reduced BSA and BPDE-BSA Standards at -20°C to avoid multiple freeze/thaw cycles. Store all other kit components at 4°C.

Preparation of Reagents

- 1X Wash Buffer: Dilute the 10X Wash Buffer Concentrate to 1X with deionized water. Stir to homogeneity.
- Anti-BPDE-I Antibody and Secondary Antibody: Immediately before use dilute the Anti-BPDE-I antibody 1:1000 and Secondary Antibody 1:1000 with Assay Diluent. Do not store diluted solutions.

Preparation of Standard Curve

1. Freshly prepare 10 µg/mL of Reduced BSA by diluting the 1 mg/mL BSA standard in 1X PBS. Example: Add 50 µL to 4.95 mL of 1X PBS.
2. Freshly prepare 1 µg/mL of BPDE-BSA by diluting the 1 mg/mL BPDE-BSA standard in 10 µg/mL of Reduced BSA. Example: Add 2 µL to 2.0 mL of 10 µg/mL Reduced BSA.
3. Prepare a series of BPDE-BSA standards according to Table 1.

| Standard Tubes | 1 µg/mL BPDE-BSA (µL) | 10 µg/mL Reduced BSA (µL) | Final BPDE-BSA Conc. (ng/mL) |
|-----------------------|------------------------------|----------------------------------|-------------------------------------|
| 1 | 1000 | 0 | 1000 |
| 2 | 500 of tube #1 | 500 | 500 |
| 3 | 500 of tube #2 | 500 | 250 |
| 4 | 500 of tube #3 | 500 | 125 |
| 5 | 500 of tube #4 | 500 | 62.5 |
| 6 | 500 of tube #5 | 500 | 31.3 |
| 7 | 500 of tube #6 | 500 | 15.6 |
| 8 | 0 | 500 | 0 |

Table 1. Preparation of BPDE-BSA Standard Curve

Preparation of Samples

Note: Mouse and rat plasma and serum are not compatible with this assay.

1. Perform a protein assay such as Bradford or BCA on all samples to determine the protein concentration.

Note: Cell and tissue lysates should not be prepared in lysis buffer containing Triton X-100, NP-40, or Igepal CA-630 because these detergents interfere with protein coating of the plate unless the detergent concentration in the 10 µg/mL protein samples is no more than 0.001%. We recommend lysis by homogenization or sonication.

2. Dilute each protein sample to 10 µg/mL in 1X PBS prior to use in the assay.

Assay Protocol

1. Prepare unknown samples according to the Preparation of Samples section above. Each 10 µg/mL protein sample and BSA Standard should be assayed in duplicate or triplicate.
2. Add 100 µL of the 10 µg/mL protein samples or Reduced/BPDE-BSA standards to the 96-well Protein Binding Plate. Incubate at 37°C for at least 2 hours or 4°C overnight.

3. Wash wells 2 times with 250 μ L 1X PBS per well. After the last wash, empty wells and tap microwell strips on absorbent pad or paper towel to remove excess wash solution.
4. Add 200 μ L of Assay Diluent per well and incubate for 1-2 hours at room temperature on an orbital shaker.
5. Wash 3 times with 250 μ L of 1X Wash Buffer with thorough aspiration between each wash. After the last wash, empty wells and tap microwell strips on absorbent pad or paper towel to remove excess 1X Wash Buffer.
6. Add 100 μ L of the diluted Anti-BPDE-I Antibody to all wells and incubate for 1 hour at room temperature on an orbital shaker. Wash the strip wells 3 times according to step 5 above.
7. Add 100 μ L of the diluted Secondary Antibody-HRP Conjugate to all wells and incubate for 1 hour at room temperature on an orbital shaker. Wash the strip wells 5 times according to step 5 above.
8. Warm Substrate Solution to room temperature. Add 100 μ L of Substrate Solution to each well, including the blank wells. Incubate at room temperature on an orbital shaker. Actual incubation time may vary from 2-30 minutes.

Note: Watch plate carefully; if color changes rapidly, the reaction may need to be stopped sooner to prevent saturation.
9. Stop the enzyme reaction by adding 100 μ L of Stop Solution to each well. Results should be read immediately (color will fade over time).
10. Read absorbance of each well on a microplate reader using 450 nm as the primary wave length. Use the Reduced BSA Standard as an absorbance blank.

Example of Results

The following figures demonstrate typical BPDE Protein Adduct ELISA results. One should use the data below for reference only. This data should not be used to interpret actual results.

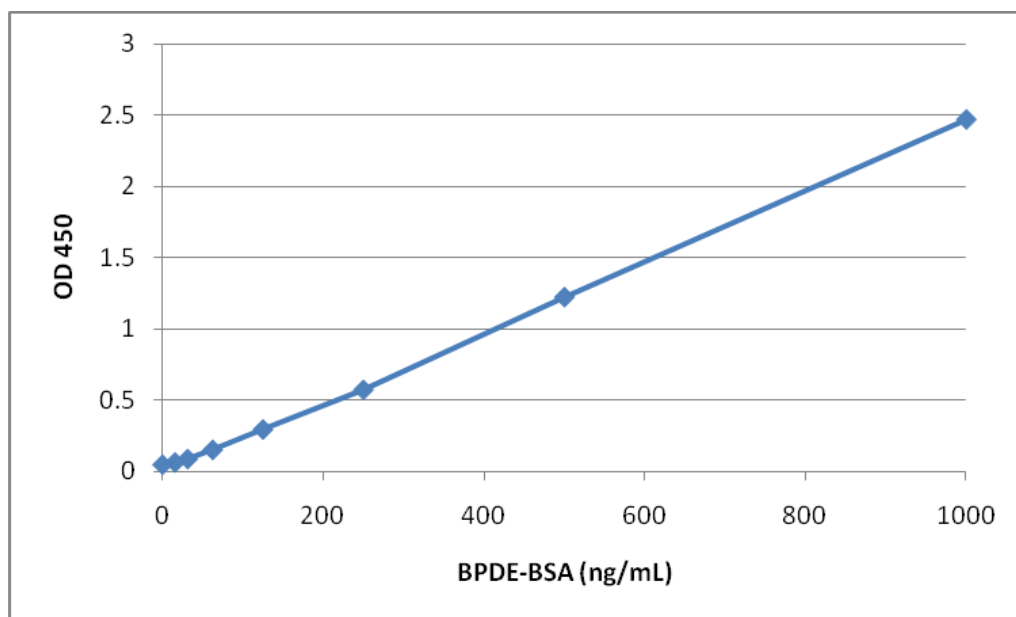


Figure 2: BPDE-BSA Standard Curve

References

1. Izzotti A, Rossi GA, Bagnasco M, De Flora S. (1991) *Carcinogenesis* **12**:1281-1285.
2. Denissenko MF, Pao A, Tang M, Pfeifer GP (1996) *Science* **274**:430-432.
3. Lee, B.M. and Santella, R.M. (1988) *Carcinogenesis*, **9**: 1773-1777.
4. Tang D, Phillips DH, Stampfer M, Mooney LA, Hsu Y, Cho S, Tsai WY, Ma J, Cole KJ, She MN, Perera FP. (2001) *Cancer Research* **61**:6708–6712.
5. Mumford JL, Williams K, Wilcosky TC, Everson RB, Young TL, Santella RM. (1996) *Mutat Res.* **359**:171–177.
6. Santella RM, Perera FP, Young TL, Zhang YJ, Chiamprasert S, Tang D, Wang LW, Beachman A, Lin JH, DeLeo VA. (1995) *Mutation Research* **334**:117–124.
7. Chung MK, Riby J, Li H, Iavarone AT, Williams ER, Zheng Y, Rappaport SM. (2010) *Anal. Biochem.* **400**:123-129.

Recent product citations

1. Lai, C. H. et al. (2016). Protein oxidation and degradation caused by particulate matter. *Sci Rep.* doi:10.1038/srep33727.
2. Feng, P. H. et al. (2015). Dysfunction of methionine sulfoxide reductases to repair damaged proteins by nickel nanoparticles. *Chem Biol Interact.* doi:10.1016/j.cbi.2015.05.003.

Warranty

These products are warranted to perform as described in their labeling and in Cell Biolabs literature when used in accordance with their instructions. THERE ARE NO WARRANTIES THAT EXTEND BEYOND THIS EXPRESSED WARRANTY AND CELL BIOLABS DISCLAIMS ANY IMPLIED WARRANTY OF MERCHANTABILITY OR WARRANTY OF FITNESS FOR PARTICULAR PURPOSE. CELL BIOLABS' sole obligation and purchaser's exclusive remedy for breach of this warranty shall be, at the option of CELL BIOLABS, to repair or replace the products. In no event shall CELL BIOLABS be liable for any proximate, incidental or consequential damages in connection with the products.

Contact Information

Cell Biolabs, Inc.
7758 Arjons Drive
San Diego, CA 92126
Worldwide: +1 858-271-6500
USA Toll-Free: 1-888-CBL-0505
E-mail: tech@cellbiolabs.com
www.cellbiolabs.com

©2011-2017: Cell Biolabs, Inc. - All rights reserved. No part of these works may be reproduced in any form without permissions in writing.