
Product Manual

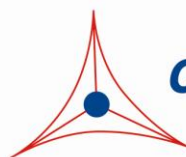
Human ApoCII ELISA Kit

Catalog Number

STA-365

96 assays

FOR RESEARCH USE ONLY
Not for use in diagnostic procedures



CELL BIOLABS, INC.

Creating Solutions for Life Science Research

Introduction

Lipoproteins are submicroscopic particles composed of lipid and protein held together by noncovalent forces. Their general structure is that of a putative spheroidal microemulsion formed from an outer layer of phospholipids, unesterified cholesterol, and proteins, with a core of neutral lipids, predominately cholesteryl esters and triacylglycerols (TAG). Plasma apolipoproteins can be grouped into two classes: the nonexchangeable apolipoproteins (ApoB-100 and ApoB-48), and the exchangeable apolipoproteins (ApoAI, ApoAII, ApoAIV, ApoCI, ApoCII, ApoCIII, and ApoE).

ApoCII has a length of 78 amino acids. The protein encoded by APOC2 gene is secreted in plasma where it is a component of very low density lipoproteins and chylomicrons. This protein activates the enzyme lipoprotein lipase in capillaries, which hydrolyzes triglycerides and thus provides free fatty acids for cells. Mutations in this gene cause hyperlipoproteinemia type IB, which is characterized by hypertriglyceridemia, xanthomas, and increased risk of pancreatitis and early atherosclerosis.

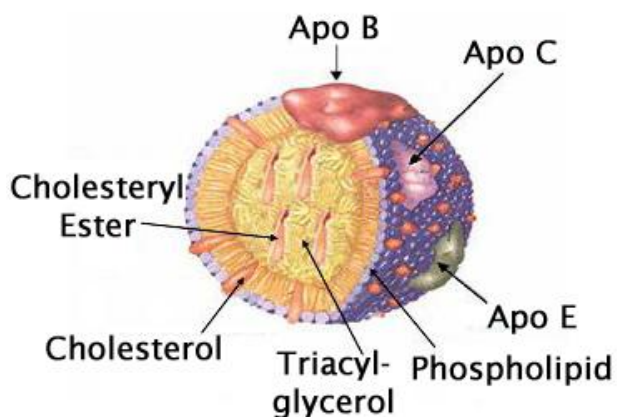


Figure 1: Structure of VLDL.

Cell Biolabs' Human ApoCII ELISA Kit is an enzyme immunoassay developed for the detection and quantitation of human ApoCII in plasma, serum or other biological fluid samples. The kit has detection sensitivity limit of 1 ng/mL human ApoCII. Each kit provides sufficient reagents to perform up to 96 assays including standard curve and unknown samples.

Related Products

1. STA-214: Copper (Cu⁺⁺) Oxidized Human Low Density Lipoprotein (LDL)
2. STA-362: Human ApoAI ELISA Kit
3. STA-363: Human ApoAII ELISA Kit
4. STA-364: Human ApoCI ELISA Kit
5. STA-366: Human ApoCIII ELISA Kit
6. STA-367: Human ApoE ELISA Kit
7. STA-368: Human ApoB-100 ELISA Kit
8. STA-369: Human Oxidized LDL ELISA Kit

Kit Components

Box 1 (shipped at room temperature)

1. Anti-ApoCII Antibody Coated Plate (Part No. 236501): One 96-well strip plate (8 x 12).
2. Biotinylated Anti-ApoCII Antibody (1000X) (Part No. 236502): One 20 µL vial.
3. Streptavidin-Enzyme Conjugate (Part No. 310803): One 20 µL vial.
4. Assay Diluent (Part No. 310804): One 50 mL bottle.
5. 10X Wash Buffer (Part No. 310806): One 100 mL bottle.
6. Substrate Solution (Part No. 310807): One 12 mL amber bottle.
7. Stop Solution (Part. No. 310808): One 12 mL bottle.

Box 2 (shipped on blue ice packs)

1. Human ApoCII Standard (Part No. 236503): One 50 µL vial of 10 µg/mL Human ApoCII in PBS plus BSA.

Materials Not Supplied

1. Plasma, Serum or Other Biological Fluids
2. PBS containing 0.1% BSA
3. 10 µL to 1000 µL adjustable single channel micropipettes with disposable tips
4. 50 µL to 300 µL adjustable multichannel micropipette with disposable tips
5. Multichannel micropipette reservoir
6. Microplate reader capable of reading at 450 nm (620 nm as optional reference wave length)

Storage

Upon receipt, aliquot and store the Human ApoCII Standard at -20°C to avoid multiple freeze/thaw cycles. Store all other components at 4°C.

Preparation of Reagents

- 1X Wash Buffer: Dilute the 10X Wash Buffer Concentrate to 1X with deionized water. Stir to homogeneity.
- Biotinylated Anti-ApoCII Antibody and Streptavidin-Enzyme Conjugate: Immediately before use dilute the Biotinylated Anti-ApoCII antibody 1:1000 and the Streptavidin-Enzyme Conjugate 1:1000 with Assay Diluent. Do not store diluted solutions.

Preparation of Human ApoCII Standard

Prepare a dilution series of human ApoCII standards in the concentration range of 0 to 100 ng/mL in Assay Diluent (Table 1).

Standard Tubes	10 µg/mL Human ApoCII Standard (µL)	Assay Diluent (µL)	Human ApoCII (ng/mL)
1	10	990	100
2	500 of Tube #1	500	50
3	500 of Tube #2	500	25
4	500 of Tube #3	500	12.5
5	500 of Tube #4	500	6.25
6	500 of Tube #5	500	3.12
7	500 of Tube #6	500	1.56
8	0	500	0

Table 1. Preparation of Human ApoCII Standards.

Preparation of Samples

The following recommendations are only guidelines and may be altered to optimize or complement the user's experimental design.

- Plasma: Collect blood with heparin or EDTA and centrifuge for 10 minutes at 1000 g at 4°C. Remove the plasma and assay immediately or store samples at -80°C up to three months. Normal plasma samples require about 5,000 to 10,000 fold dilution with PBS containing 0.1% BSA immediately before running the ELISA.
- Serum: Harvest serum and centrifuge for 10 minutes at 1000 g at 4°C. Assay immediately or store samples at -80°C up to three months. Normal serum samples require about 5,000 to 10,000 fold dilution with PBS containing 0.1% BSA immediately before running the ELISA.
- Other Biological Fluids: Centrifuge samples for 10 minutes at 1000 g at 4°C. Assay immediately or store samples at -80°C up to three months.

Assay Protocol

1. Prepare dilutions of plasma, serum or other biological fluid samples in PBS containing 0.1% BSA.
2. Add 100 μL of ApoCII unknown sample or standard to the Anti-ApoCII Antibody Coated Plate. Each ApoCII unknown sample, standard and blank should be assayed in duplicate.
3. Incubate at 37°C for at least 2 hours or 4°C overnight.
4. Wash microwell strips 3 times with 250 μL 1X Wash Buffer per well with thorough aspiration between each wash. After the last wash, empty wells and tap microwell strips on absorbent pad or paper towel to remove excess 1X Wash Buffer.
5. Add 100 μL of the Biotinylated diluted Anti-ApoCII antibody to each well. Incubate at room temperature for 1 hour on an orbital shaker.
6. Wash the strip wells 3 times according to step 4 above.
7. Add 100 μL of the diluted Streptavidin-Enzyme Conjugate to each well. Incubate at room temperature for 1 hour on an orbital shaker.
8. Wash the strip wells 3 times according to step 4 above. Proceed immediately to the next step.
9. Warm Substrate Solution to room temperature. Add 100 μL of Substrate Solution to each well, including the blank wells. Incubate at room temperature on an orbital shaker. Actual incubation time may vary from 2-30 minutes.
Note: Watch plate carefully; if color changes rapidly, the reaction may need to be stopped sooner to prevent saturation.
10. Stop the enzyme reaction by adding 100 μL of Stop Solution into each well, including the blank wells. Results should be read immediately (color will fade over time).
11. Read absorbance of each microwell on a spectrophotometer using 450 nm as the primary wave length.

Example of Results

The following figures demonstrate typical results with the Human ApoCII ELISA Kit. One should use the data below for reference only. This data should not be used to interpret actual results.

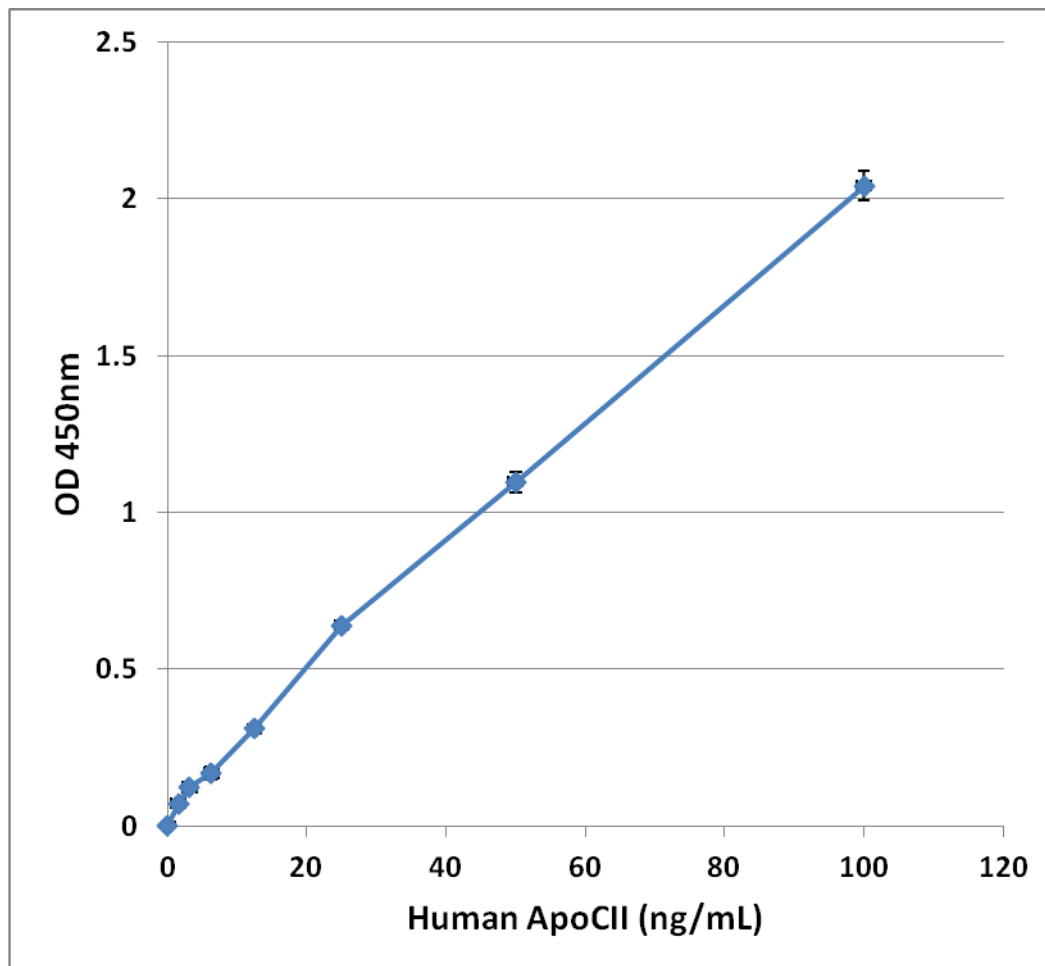


Figure 2: Human ApoCII ELISA Standard Curve.

References

1. Segrest J. P., Garber D. W., Brouillette C. G., Harvey S. C., and Anantharamaiah G. M. *Adv. Protein Chem.* **45**: 303–369, 1994.
2. Segrest J. P., Jones M. K., De Loof H., Brouillette C. G., Venkatachalapathi Y. V., and Anantharamaiah G. M. *J. Lipid Res.* **33**: 141–166, 1992.
3. Kim S. Y., Park S. M., and Lee S. T. *Biochem. Biophys. Res. Commun.* **339** (1): 47–54, 2006.

Recent Product Citation

Xu, D. D. et al. (2014). Discovery and identification of serum potential biomarkers for pulmonary tuberculosis using iTRAQ-coupled two-dimensional LC-MS/MS. *Proteomics*. **14**:322-331.

Warranty

These products are warranted to perform as described in their labeling and in Cell Biolabs literature when used in accordance with their instructions. THERE ARE NO WARRANTIES THAT EXTEND BEYOND THIS EXPRESSED WARRANTY AND CELL BIOLABS DISCLAIMS ANY IMPLIED WARRANTY OF MERCHANTABILITY OR WARRANTY OF FITNESS FOR PARTICULAR PURPOSE. CELL BIOLABS' sole obligation and purchaser's exclusive remedy for breach of this warranty shall be, at the option of CELL BIOLABS, to repair or replace the products. In no event shall CELL BIOLABS be liable for any proximate, incidental or consequential damages in connection with the products.

Contact Information

Cell Biolabs, Inc.
7758 Arjons Drive
San Diego, CA 92126
Worldwide: +1 858-271-6500
USA Toll-Free: 1-888-CBL-0505
E-mail: tech@cellbiolabs.com
www.cellbiolabs.com

©2011-2020: Cell Biolabs, Inc. - All rights reserved. No part of these works may be reproduced in any form without permissions in writing.