

---

Product Manual

# RAPAd<sup>®</sup> RSV Adenoviral Expression System

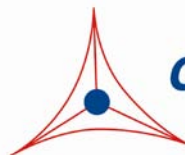
Catalog Number

VPK-251

1 kit

**FOR RESEARCH USE ONLY**  
**Not for use in diagnostic procedures**

---



**CELL BIOLABS, INC.**

*Creating Solutions for Life Science Research*

## **Introduction**

Recombinant adenoviruses have tremendous potential in both research and therapeutic applications. There are numerous advantages they provide when introducing genetic material into host cells. The permissive host cell range is very wide. The virus has been used to infect many mammalian cell types (both replicative and non-replicative) for high expression of the recombinant protein. Recombinant adenoviruses are especially useful for gene transfer and protein expression in cell lines that have low transfection efficiency with liposome. After entering cells, the virus remains epichromosomal (i.e. does not integrate into the host chromosome so does not activate or inactivate host genes). Recently, recombinant adenoviruses have been used to deliver RNAi into cells.

Two methods have traditionally been used to generate recombinant adenoviruses. The first involves homologous recombination of a shuttle vector containing gene of interest and an adenoviral backbone plasmid vector (restricted in E1/E3) in an adenovirus packaging cell line. The isolation of recombinant adenovirus by this method involves performing multiple plaque isolations to avoid wild-type virus and is extremely laborious and time consuming. The second method, pAdEasy system, employs the homologous recombination machinery in *E. coli*, a recombinant adenovirus is produced by a double-recombination event between cotransformed adenoviral backbone plasmid vector and a shuttle vector carrying the gene of interest. For the pAdEasy method, the system is high fidelity, but inefficient and requires the screening of many bacterial colonies. This results in a significant time commitment even before transfection of recombinant DNA into E1-expressing cells such as HEK293 cells.

Cell Biolabs' RAPAd® Adenoviral Expression System provides a much faster and safer method to generate RCA-free recombinant adenovirus at high titer (see Table 1). The RAPAd® system uses a novel Ad backbone devoid of the left-hand ITR, the packaging signal and E1 sequences. There is no need to perform the bacterial *in vitro* homologous recombination (pAdEasy method), and also the multiple plaque isolations (standard homologous recombination method in packaging cell line). The RAPAd® system allows for generation of a recombinant virus within 2 weeks and the virus produced contained virtually no contaminating E1a sequences or replication-competent virus (RCA).

Cell Biolabs' RAPAd® Adenoviral Expression System is simple to use. The method is straightforward and requires very limited 'hands on' time from shuttle/backbone cotransfection to the isolation of virus particles. It produces equivalent infectious titers as the standard viral genome/shuttle plasmid recombination method.

In Cell Biolabs' RAPAd® RSV Adenoviral Expression System, the shuttle vector contains a RSV ahead of the multiple cloning sites.

<b>Standard Homologous Recombination</b>	<b>pAdEasy Expression System</b>	<b>RAPAd® Expression System</b>
<p data-bbox="155 327 493 432">Cotransfect 293 cells with Shuttle Vector and Ad Backbone Vector</p> <p data-bbox="310 464 326 604">↓</p> <p data-bbox="261 621 380 726">Multiple Plaque Isolations</p> <p data-bbox="310 747 326 888">↓</p> <p data-bbox="233 909 412 982">Virus Amplification</p> <p data-bbox="310 993 326 1134">↓</p> <p data-bbox="250 1163 396 1194">Viral Stock</p>	<p data-bbox="610 327 799 432">Linearize Shuttle Vector using PmeI</p> <p data-bbox="691 464 708 604">↓</p> <p data-bbox="526 621 883 726">Cotransform <i>E.coli</i> BJ5183 cells with linearized Shuttle Vector and pAdEasy Vector</p> <p data-bbox="691 747 708 888">↓</p> <p data-bbox="529 909 880 982">Recombinant selection by restriction enzyme analysis</p> <p data-bbox="691 993 708 1134">↓</p> <p data-bbox="558 1163 850 1236">Linearize recombinant plasmid using PacI</p> <p data-bbox="691 1247 708 1388">↓</p> <p data-bbox="581 1417 828 1449">Transfect 293 cells</p> <p data-bbox="691 1470 708 1610">↓</p> <p data-bbox="630 1640 779 1671">Viral Stock</p>	<p data-bbox="915 327 1279 432">Linearize Shuttle Vector and RAPAd® Ad Backbone Vector using PacI</p> <p data-bbox="1097 464 1114 604">↓</p> <p data-bbox="1023 621 1175 684">Cotransfect 293 cells</p> <p data-bbox="1097 747 1114 888">↓</p> <p data-bbox="1023 909 1169 940">Viral Stock</p>
<b>12-18 weeks</b>	<b>8-9 weeks</b>	<b>2-3 weeks</b>

**Table 1.** Outline of Recombinant Adenovirus Systems

## **Related Products**

1. AD-100: 293AD Cell Line
2. AD-200: ViraDuctin™ Adenovirus Transduction Reagent
3. VPK-090: ViraBind™ Lentivirus Concentration and Purification Kit
4. VPK-099: ViraBind™ Adenovirus Miniprep Kit
5. VPK-100: ViraBind™ Adenovirus Purification Kit
6. VPK-109: QuickTiter™ Adenovirus Titer Immunoassay Kit
7. VPK-110: QuickTiter™ Adenovirus Titer ELISA Kit
8. VPK-111: Rapid RCA Assay Kit
9. VPK-130: ViraBind™ Retrovirus Concentration and Purification Kit
10. VPK-252: RAPAd® CMV Adenoviral Expression System
11. VPK-254: RAPAd® CMV Adenoviral Bicistronic Expression System (GFP)

## **Kit Components**

1. pacAd5 RSVK-NpA Shuttle Vector (Part No. 325101): One 40 µL vial at 0.25 mg/mL.
2. pacAd5 9.2-100 Vector (Part No. 325002): One 40 µL vial at 0.25 mg/mL.
3. pacAd5 RSV-GFP Control Vector (Part No. 325003): One 40 µL vial at 0.25 mg/mL.
4. pacAd5 RSV-ntLacZ Control Vector (Part No. 325102): One 40 µL vial at 0.25 mg/mL.

## **Materials Not Supplied**

1. 293 cells: we recommend 293AD Cell Line (Cat.# AD-100) for high titer production of recombinant adenovirus.
2. 293 Cell Culture Medium
3. Transfection Reagents
4. PacI (New England Biolabs, Cat.# R0547L)

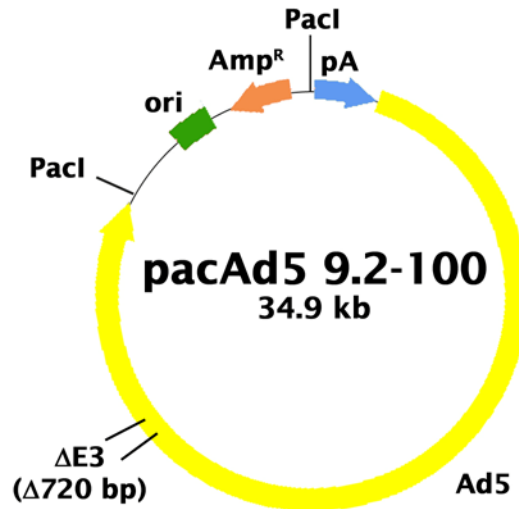
## **Storage**

Upon receipt, store all kit components at -20°C.

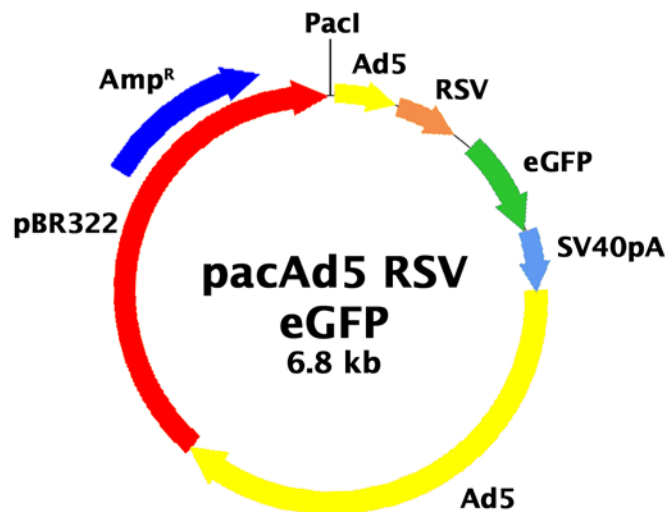
## **Safety Considerations**

Remember that you will be working with samples containing infectious virus. Follow the recommended NIH guidelines for all materials containing BSL-2 organisms.





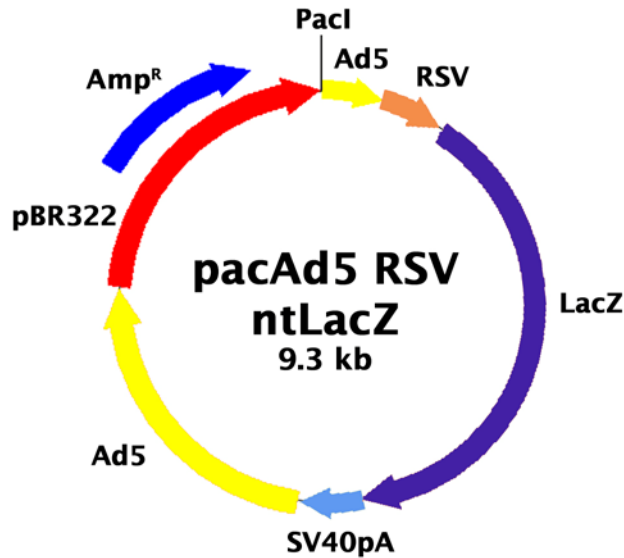
**Figure 2.** pacAd5 9.2-100 Vector (34947 bp, Ampicillin-resistant). The novel pacAd5 9.2-100 Ad backbone vector is devoid of the left-hand ITR, the packaging signal and E1 sequences.



**Figure 3.** pacAd5 RSV-GFP Control Vector (6799 bp, Ampicillin-resistant).

**pacAd5 RSV-GFP Features:**

3-10:	PacI
16-368:	1-353 of Ad5
382-775:	RSV Promoter
856-1575:	GFP
1577-2024:	SV40 pA
2025-4479:	3328-5792 of Ad5
5731-6591:	$\beta$ Lactamase



**Figure 4.** pacAd5 RSV-ntLacZ Control Vector (9278 bp, Ampicillin-resistant).

**pacAd5 RSV-GFP Features:**

3-10:	PacI
16-368:	1-353 of Ad5
382-775:	RSV Promoter
970-4031:	ntLacZ
4056-4503:	SV40 pA
4504-6958:	3328-5792 of Ad5
8210-9070:	$\beta$ Lactamase

**Preparation of Recombinant Adenovirus**

**I. Vector Linearization with PacI**

1. Digest a sufficient amount of the pacAd5 RSVK-NpA shuttle vector containing gene of interest and the pacAd5 9.2-100 Ad backbone vector with PacI.
2. Run 0.5  $\mu$ g of each digested DNA and undigested DNA on a 0.8% agarose gel to confirm the completion of PacI digestion (For pacAd5 9.2-100, one band of ~33 kb and a second band of 2.0 kb).
3. Remove buffer and enzyme from the remainder of the restriction reactions by phenol extraction/ethanol precipitation or using a similar DNA purification kit.
4. Resuspend the DNA in sterile dH<sub>2</sub>O. Store the digested DNA at -20°C.

**II. Transfection**

1. Seed  $2 \times 10^6$  cells in a 60 mm culture dish without antibiotics one day before transfection.

2. After 16 to 24 hours, start transfection when the culture becomes 70-80% confluence.  
*Note: We suggest transfecting cells with FuGENE® Transfection Reagent (Roche Applied Science) or Lipofectamine™ Plus (Invitrogen). For example, 4 µg of pacAd5 RSVK-NpA shuttle vector and 1 µg of pacAd5 9.2-100 Ad backbone vector are mixed with 9 µL FuGENE® Transfection Reagent according to the manufacturer's recommendation. The mixed DNA-FuGENE® complex is added by dropwise into the culture media.*
3. Aspirate the media containing transfection reagent the next day and add 4 mL of complete culture medium.
4. After incubating for 7 days, check for the presence of plaques. If plate is ready for harvest, (>50% of cells lifted), then collect the Crude Viral Lysate. If not, feed the cells with 1 mL of complete culture medium, continue to incubate at 37°C with CO<sub>2</sub>.
5. On day 10, check for the presence of plaques. If plate is ready for harvest, (>50% of cells lifted), then collect the Crude Viral Lysate. If not, feed the cells with 1 mL of complete culture medium, continue to incubate at 37°C with CO<sub>2</sub>. Keep checking plate for the presence of plaques. Do not keep plate more than 15 days.

### III. Harvesting the Crude Viral Lysate

1. Harvest adenovirus-containing cells by squirting cells off the plate with a 5 or 10 mL sterile serological pipette. Transfer cells and media to a sterile 15 ml tube. Scrape the cells into the medium with a cell lifter if necessary.
2. Release viruses from cells by three freeze/thaw cycles (10 minutes each in 37°C water bath and dry ice-methanol bath).
3. Centrifuge the cell lysate in a table-top centrifuge at 3000 rpm for 15 minutes at room temperature to pellet the cell debris.
4. Aliquot and store the Crude Viral Lysate (Initial Viral Stock) at -80°C.

### IV. Amplification

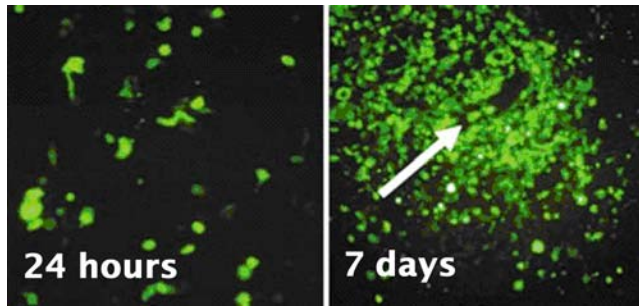
*Note: The following procedure is suggested for T75 flasks and may be optimized to suit individual needs.*

1. Seed 3-5 x 10<sup>6</sup> cells in a T75 flask one day before infection.
2. Add 50% of the above Crude Viral Lysate to the culture. We recommend using a multiplicity of ≥0.5 PFU (plaque forming units) or enough viruses that cells demonstrate cytopathic effects (CPEs) within 48 hrs.
3. During 24 - 48 hr infection, examine the monolayer twice per day under the microscope for CPE. When CPE is nearly complete (i.e. most cells rounded but not yet detached from the flask), harvest cells by pipetting media up and down to wash the infected cells from the flask into the media.
4. Pool infected cells and medium. Pellet cells by centrifugation at 1000 g for 5 minutes. Remove supernatant, resuspend cell pellet in medium or in 10 mM Tris, pH 8.0, 100 mM NaCl. (0.25-0.5 mL per T75 flask).
5. Release the adenoviruses from the cell suspension with three freeze/thaw cycles. Centrifuge at 3000 g for 10 minutes to pellet the cell debris. Discard the pellet and save supernatant as viral stock.
6. The viral supernatant can be stored at -80°C or immediately purified or titered.



## Example of Results

The following figures demonstrate typical results of generating recombinant adenovirus. One should use the data below for reference only. This data should not be used to interpret actual results.



**Figure 5.** Generation of recombinant adenovirus using the RAPAd® Adenoviral Expression System. 293 cells were transfected with PacI linearized pacAd5 RSV-GFP vector and pacAd5 9.2-100 vector. Plates were examined for the presence of viral foci under inverted fluorescence microscope.

## Appendix

### pacAd5 RSVK-NpA Plasmid Sequence

```
AATTAATTAAGCTAGCATCATCAATAATATACCTTATTTTGGATTGAAGCCAATATGATAATGAGGGGGTGGAGTTTGTGACGTGGCGCGGGGCGTGGGAACG
GGGCGGGTGAAGTAGTAGTGTGGCGAAGTGTGATGTTGCAAGTGTGGCGGAACACATGTAAGCGACGGATGTGGCAAAGTGACGTTTTTGGTGTGCGCCGG
TGTACACAGGAAGTGACAATTTTCGCGCGGTTTTAGGCGGATGTTGTAGTAAATTTGGGCGTAACCGAGTAAGATTTGGCCATTTTCGCGGGAAAACTGAATA
AGAGGAAGTGAATCTGAATAATTTTGTGTTACTCATAGCGCGTAATATTTGTCTAGGGAGATCTGCGATGTACGGGCCAGATATACGCGTATCTGAGGGGAC
TAGGGTGTGTTTAGGCGAAAAAGCGGGCTTCGTTGTACGCGGTTAGGAGTCCCTCAGGATATAGTAGTTTCGCTTTTGCATAGGGAGGGGAAATGTAGTTC
TTATGCAATACTCTTGTAGTCTTGCACATGGTAACGATGAGTTAGCAACATGCCCTTACAAGGAGAGAAAAAGCACCGTGCATGCCGATTGGTGGAAAGTAAGG
TGGTACGATCGTGCCTTATTAGGAAGGCAACAGACGGGTCTGACATGGATTGGACGAACTGAATTCGCCATTGCAGAGATATTGTATTTAAGTGCCTAGC
TCGATAACAATAAAGCCATTTGACCATTCACCACATTTGGTGTGCACCTCCAAGCTGGTACCCTTAAACTCGAGGTCGACGGTATCGATAAGCTTGATATCGA
ATTCCCTGCAGCCCGGGGATCCACTAGTTCTAGAGCGGCCGCCACCGCGGGGAGATCCAGACATGATAAGATACATTGATGAGTTTGGACAAACCACAACCTAG
AATGCAGTGAAAAAATGCTTTATTTGTGAAATTTGTGATGCTATTGCTTTATTTGTAACCATTATAAGCTGCAATAAAACAAGTTAACAACAACAATTGCATT
CATTTTATGTTTCAGTTCAGGGGGAGGTGTGGGAGGTTTTTAAAGCAAGTAAACCTCTACAAATGTGGTATGGCTGATTATGATCCCGGCTGCCTCGCGC
GTTTTCGGTGATGACCGTGAAAACCTCTTGACACATGCAGCTCCCGGAGACGGTACAGCTTGTCTGTAAGCGGATGCCGGGAGCAGACAAGCCCGTCAGGGCG
CGTCAGCGGGTGTGGCGGGTGTGGGGCGCAGCCATGAGGTCGACTCTAGTCCCCCGGTGGCAGATCTGGAAGGTGCTGAGGTACGATGAGACCCGCACCA
GGTGCAGACCTGCGAGTGTGGCGGTAAACATATTAGGAACCAGCCTGTGATGCTGGATGTGACCGAGGAGCTGAGGCCCGATCATTGGTGTGGCCTGCAC
CCGCGTGAAGTTGGCTCTAGCGATGAAGATACAGATTGAGGTAAGTAAAGTGTGGGCGTGGCTTAAAGGTGGGAAAGAATATAAGGTGGGGTCTTATG
TAGTTTTGTATCTGTTTTGCAGCAGCCCGCCGCCATGAGCACCACTCGTTTGTGGAAGCATTGTGAGCTCATATTTGACAACCGCATGCCCCATGGG
CCGGGTGCGTCAGAAATGTGATGGGCTCCAGCATTGATGGTCCCGCCGTCTGCCCCAAACTCTACTACCTTGACCTACGAGACCGTGTCTGGAACCCCGT
GGAGACTGCAGCCTCCGCCCGCTTCAGCCGCTGCAGCCAGCCCGCGGGATTGTGACTGACTTTGCTTTCTGAGCCCGCTTGAAGCAGTGCAGCTTCC
CGTTTCAATCCGCCCGGATGACAAGTTGACGGCTCTTTTGGCACAATGGATTCTTTGACCCGGAACTTAATGTCTGTTCTCAGCAGCTGTTGGATCTGCGCC
AGCAGGTTTCTGCCCTGAAGGCTTCTCCCTCCCAATGCGGTTTTAAAAATAAAATAAAAAACCAAGCTCTGTTGGATTGGATCAAGCAAGTGTCTTGCTG
TCTTTATTTAGGGTTTTGCGCGCGCGGTAGGCCCGGACCAGCGTCTCGGTGTTGAGGTCCTGTGATTTTTCCAGGACGTGGTAAAGGTGACTCTGG
ATGTTTCAAGATACATGGGCATAAGCCCGTCTCTGGGTTGGAGGTAGCACCATGCAGAGCTTATGCTGCGGGTGGTGTGTGATGATCCAGTCTGAGCAGG
AGCGCTGGGCGTGGTGCCTAAAAATGCTTTTCAAGTAGCAAGCTGATTGCCAGGGGACGGCCCTTGGTGTAAAGTGTTTAACAAGCGGTTAAGCTGGGATGGGTG
CATACGTGGGATATGAGATGCATCTTGGACTGTAATTTTAGTTGGCTATGTTCCAGCCATATCCCTCCGGGATTCATGTTGTGCAGAACCACCAAGACA
GTGATCCGGTGCACCTTGGGAAATTTGTGATGAGCTTAGAAGGAAATCGTGGAAAGAACTTGGAGACGCCCTTGTGACCTCAAGATTTCCATGCATTCTG
CCATAATGATGGCAATGGGCCACGGGCGGCGCCCTGGGCGAAGATATTTCTGGGATCACTAACGTCATAGTTGTGTTCCAGGATGAGATCGTCATAGGCCAT
TTTTACAAGCGCGGGCGGAGGGTGCAGACTGCGGTATAATGGTTCCATCCGGCCAGGGGCGTAGTTACCTCAGAGATTTGCATTTCCACGCTTTGAGT
TCAGATGGGGGATCATGTCTACCTGCGGGCGATGAAGAAAAAGGTTTCCGGGTAGGGGAGATCAGCTGGGAAGAAAGCAGGTTCTTGAGCAGCTGCGACT
TACCGCAGCCGGTGGGCCGTAATCACCATTATTACCGGTGCAACTGGTAGTTAAGAGACTGCAGCTGCCGTCATCCCTGAGCAGGGGGGCGACTTCGTT
AAGCATGTCCCTGACTCGCATGTTTTCCCTGACCAATCCGCCAGAAGCGCTCGCCGCCAGCGATAGCAGTTCTTGCAAGGAAGCAAAGTTTTTCAACGGT
TTGAGACCGTCCGCCGTAGGCATGCTTTTGGAGCTTTGACCAAGCAGTTCCAGGCGGTCCACAGCTCGGTCACTGCTCTACGGCATCTCGATCCAGCATAT
CTCCTGTTTTCGCGGTTGGGGCGGCTTTGCTGTACGGCAGTAGTGGTGTCTGTCAGACGGGCGAGGGTCATGCTTTCCACGGGCGCAGGGTCTCGT
AGCGTAGTCTGGGTACCGGTGAAGGGTGCCTCCGGCTGCGCGCTGGCCAGGGTGCCTTGGAGGCTGGTCTGCTGGTGTGAAGCGTGCCTGCTTCCG
CTGCGCTCGGCCAGGTAGCATTTGACCATGGTGTATAGTCCAGCCCCCTCCGCGCGTGGCCCTTGGCGCGCAGCTTGCCTTGGAGGAGGCGCCGACGA
GGGGCAGTGCAGACTTTTGGGGCGTAGAGCTTGGGCGCAGAAAAACCGATTCCGGGGAGTAGGCATCCGCGCCGAGGCCCCGAGACGGTCTCGCATTC
ACGAGCCAGGTGAGCTCTGGCCGTTCCGGGTCAAAAAACAGGTTTTCCCCATGCTTTTTGATGCGTTTCTTACCTCTGGTTTTCCATGACCCGGTGTCCAGCT
CGGTGACGAAAAGGCTGTCCGTGTCCCGTATACAGACTTGGAGGGCTGTCTCGACCGATGCCCTTGGAGAGCTTCAACCCAGTCAGCTCCTTCCGGTGGG
```

CGCGGGGCATGACTATCGTCGCCGCACTTATGACTGTCTTCTTTATCATGCAACTCGTAGGACAGGTGCCGGCAGCGCTCTGGGTCATTTTCGGCGAGGACCG  
CTTTCGCTGGAGCGCGACGATGATCGGCCTGTCTGCTTGGGTTATTCGGAATCTTGACGCGCCCTCGCTCAAGCCTTCGTCACCTGGTCCCAGCCACCAAACGTTTC  
GGCGAGAAGCAGGCCATTATCGCCGGCATGGCGCCGACGCGCTGGGCTACGCTTGTGGGTTTCGCGACGCGAGGCTGGATGGCCTTCCCCATTATGATTTC  
TTCTCGCTTCCGGCGGCATCGGGATGCGCGGTTGCAGGCCATGCTGTCCAGGCAGGTAGATGACGCCATCAGGGACAGCTTCAAGGCCAGCAAAAGGCCAG  
GAACCGTAAAAAGGCCGCTTGTGGCGTTTTTCCATAGGCTCCGCCCCCTGACGAGCATCAAAAAATCGACGCTCAAGTCAGAGGTGGCGAAACCCGACA  
GGACTATAAAGATACCAGGCGTTTTCCCCTGGAAGCTCCCTCGTGCCTCTCTGTCCGACCTGCGCTTACCAGATACCTGTCCGCTTCTCCCTTCGG  
GAAGCGTGGCGCTTCTCATAGCTCACGCTGTAGGTATCTCAGTTCGGTGTAGGTCTGCTCCTCAAGCTGGGCTGTGTGCACGAACCCCGCTTCAGCCGA  
CCGCTGCGCCTTATCCGGTAACTATCGTCTTGAGTCCAACCCGGTAAGACACGACTTATCGCCACTGGCAGCAGCCACTGGTAACAGGATTAGCAGAGCGAGG  
TATGTAGGCGGTGCTACAGAGTTCTTGAAGTGGTGGCTAACTACGGCTACACTAGAAGGACAGTATTTGGTATCTGCGCTCTGCTGAAGCCAGTTACCTTCG  
GAAAAAGAGTTGGTAGCTCTTGTATCCGGCAAAACAAACCACCGCTGGTAGCGGTGGTTTTTTTGTGTTGCAAGCAGCAGATTACGCGCAGAAAAAAGGATCTCA  
AGAAGATCCTTTGATCTTTTCTACGGGGTCTGACGCTCAGTGAACGAAACTCACGTTAAGGGATTTTGGTCATGAGATTATCAAAAAGGATCTTACCTAG  
ATCCTTTAAATTAATAAATGAAGTTTTAAATCAATCTAAAGTATATATGAGTAAACTTGGTCTGACAGTTACCAATGCTTAATCAGTGAGGACCTATCTCAG  
CGATCTGTCTATTTGTTTCATCCATAGTTGCTGACTCCCGTCTGTGTAGATAACTACGATACGGGAGGGCTTACCATCTGGCCCCAGTGTCTGCAATGATACC  
GCGAGACCCACGCTCACCGGCTCCAGATTTATCAGCAATAAACAGCCAGCCGGAAGGGCCGAGCGCAGAAGTGGTCTGCAACTTTATCCGCTCCATCCAG  
TCTATTAATTTGTTGCCGGGAAGCTAGAGTAAGTAGTTGCCAGTTAATAGTTTGCAGCAACGTTGTTGCCATTTGCTGCAGGCATCGTGGTGTACGCTCGT  
TTGGTATGGCTTCACTCAGCTCCGGTCCCAACGATCAAGGCGAGTTACATGATCCCCATGTTGTGCAAAAAAGCGGTTAGCTCCTTCGGTCTCCGATCGT  
TGTGAGAAGTAAGTTGGCCGAGTGTATCACTCATGGTTATGGCAGCACTGCATAATTCTTACTGTATGCCATCCGTAAGATGCTTTTCTGTGACTGGT  
GAGTACTCAACCAAGTCAATTTGAGAATAGTGTATGCGGCGACCGAGTTGCTTGTGCCGGCTCAACACGGGATAATACCGCCACATAGCAGAACTTTAA  
AAGTGTCTCATTTGAAACGTTCTTCCGGGCGAAAACTCTCAAGGATCTTACCGTGTGAGATCCAGTTTCGATGTAACCCACTCGTGACCCCAACTGATC  
TTCAGCATCTTTACTTTACCAGCGTTTCTGGGTGAGCAAAAAAGGAAAGGCAAAATGCCGCAAAAAAGGGAATAAGGGCGACACGGAAATGTTGAATACTC  
ATACTCTTCTTTTCAATATATTGAAGCATTTATCAGGGTATTGTCTCATGAGCGGATACATATTTGAATGATTTAGAAAAATAAACAAATAGGGGTTCC  
CGCGCACATTTCCCGGAAAAGTGCCACCTGACGCTCTAAGAAACCATATTATCATGACATTAACCTATAAAAAATAGGCGTATCACGAGGCCCTTTCGTCTTCA  
AGAA

## References

1. Bett AJ, Haddara W, Prevec L and Graham FL. (1994) *Proc Natl Acad Sci U S A*. **91**:8802-6 (Homologous recombination in packaging cell line)
2. He, T. C., Zhou, S., da Costa, L. T., Yu, J., Kinzler, K. W. *et al.* (1998) *Proc Natl Acad Sci U S A* **95**:2509-14. (pAdEasy System)
3. R D Anderson, R E Haskell, H Xia, B J Roessler and B L Davidson (2000) *Gene Ther.* **7**:1034-8. (RAPAd® System).

## Recent Product Citations

1. Snyder, G.D. *et al.* (2008). Surfactant protein D is expressed and modulates inflammatory responses in human coronary artery smooth muscle cells. *Am. J. Physiol. Heart Circ. Physiol.* **294**:H2053-H2059.
2. Singh, V.P. and Mark A. McNiven (2008). Src-mediated cortactin phosphorylation regulates actin localization and injurious blebbing in acinar cells. *Mol. Biol. Cell* **19**:2339-2347.
3. Langley, B. *et al.* (2008). Pulse inhibition of histone deacetylases induces complete resistance to oxidative death in cortical neurons without toxicity and reveals a role for cytoplasmic p21<sup>waf1/cip1</sup> in cell cycle-independent neuroprotection. *J. Neurosci.* **28**:163-176.
4. VanOosten, R.L. and Thomas S. Griffith (2007). Activation of tumor-specific CD8+ T cells after intratumoral Ad5-TRAIL/CpG Oligodeoxynucleotide combination therapy. *Cancer Res.* **67**:11980-11990.
5. Vincent, A.M. *et al.* (2007). Receptor for advanced glycation end products activation injures primary sensory neurons via oxidative stress. *Endocrinology* **148**:548-558.

## Notice to Purchaser

This product is sold for research and development purposes only and is not to be incorporated into products for resale without written permission from Cell Biolabs. The patented RAPAd® technology is covered by a license from University of Iowa. By the use of this product you accept the terms and

conditions of all applicable Limited Use Label Licenses. You may contact our Business Development department at [busdev@cellbiolabs.com](mailto:busdev@cellbiolabs.com) for information on sublicensing this technology.

### **Warranty**

These products are warranted to perform as described in their labeling and in Cell Biolabs literature when used in accordance with their instructions. THERE ARE NO WARRANTIES THAT EXTEND BEYOND THIS EXPRESSED WARRANTY AND CELL BIOLABS DISCLAIMS ANY IMPLIED WARRANTY OF MERCHANTABILITY OR WARRANTY OF FITNESS FOR PARTICULAR PURPOSE. CELL BIOLABS' sole obligation and purchaser's exclusive remedy for breach of this warranty shall be, at the option of CELL BIOLABS, to repair or replace the products. In no event shall CELL BIOLABS be liable for any proximate, incidental or consequential damages in connection with the products.

### **Contact Information**

Cell Biolabs, Inc.  
7758 Arjons Drive  
San Diego, CA 92126  
Worldwide: +1 858-271-6500  
USA Toll-Free: 1-888-CBL-0505  
E-mail: [tech@cellbiolabs.com](mailto:tech@cellbiolabs.com)  
[www.cellbiolabs.com](http://www.cellbiolabs.com)

©2008-2016: Cell Biolabs, Inc. - All rights reserved. No part of these works may be reproduced in any form without permissions in writing.